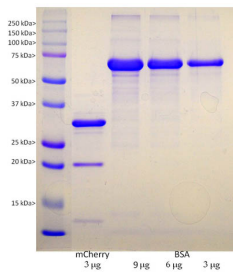


Recombinant mCherry Protein (A270585)

Specifications:

Name:	Recombinant mCherry Protein
Applications:	SDS-PAGE, ELISA
Expression System:	Escherichia coli
Nature:	Recombinant
Protein Length:	Full length protein.
Sequence:	MVSKGEEDNMAIIKEFMRFKVHMEGSVNGHEFEIEGEGEGRPYEGTQTAKLKVTKGGP LPFAWDILSPQFMYGSKAYVKHPADIPDYLKLSFPEGFKWERVMNFEDGGVVTVTQDS SLQDGEFIYKVKLRGTNFPDGPVMQKKTMGWEASSERMYPEDGALKGEIKQRLKLD GGHYDAEVKTTYKAKKPVQLPGAYNVNIKLDITSHNEDYTIVEQYERAEGRHSTGGMD ELYK
Tag:	His Tag (C-terminus)
Molecular Weight:	34 kDa
Product Form:	Liquid
Disclaimer:	This product is for research use only. It is not intended for diagnostic or therapeutic use.

Images:



Coomassie brilliant blue stained SDS-PAGE of Recombinant mCherry Protein (A270585). The lanes contain samples of: [1] Protein standards, [2] 3 µg of Recombinant mCherry Protein (A270585), [3] 9 µg of BSA, [4] 6 µg of BSA, and [5] 3 µg of BSA. The band on the SDS-PAGE with an apparent molecular weight of 34 kDa corresponds to the Recombinant mCherry Protein (A270585), which runs approximately 5 kDa slower than the native protein due to the addition of the His-tag and other vector-derived sequences. The mCherry protein is known to be somewhat unstable, and this accounts for the band at about 20 kDa, which is clearly derived from the intact protein as it is immunoreactive with mCherry antibodies.