

## Anti-IL-1 beta Antibody [IL1B/3993] (A277663)

### Specifications:

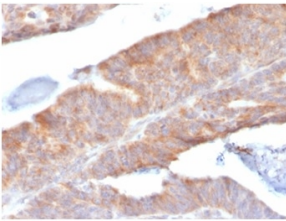
Name:	Anti-IL-1 beta Antibody [IL1B/3993]
Description:	Mouse monoclonal [IL1B/3993] antibody to IL-1 beta.
Specificity:	This antibody recognizes a protein of 17-31kDa, identified as interleukin 1beta. It shows no cross-reaction with interleukin 1alpha. Epitopes of MAb IL1B/463 and IL1B/3993 are different and provide a good pair for developing an ELISA. This cytokine is produced by activated macrophages as a proprotein, which is proteolytically processed to its active form by caspase 1 (CASP1/ICE). This cytokine is an important mediator of the inflammatory response, and is involved in a variety of cellular activities, including cell proliferation, differentiation, and apoptosis. The induction of cyclooxygenase-2 (PTGS2/COX2) by this cytokine in the central nervous system (CNS) is found to contribute to inflammatory pain hypersensitivity. This gene and eight other interleukin 1 family genes form a cytokine gene cluster on chromosome 2.
Applications:	ELISA, IF, IHC-P
Recommended Dilutions:	IHC-P: 1-2 µg/ml
Reactivity:	Human
Immunogen:	Recombinant fragment corresponding to human IL-1 beta. The exact sequence is proprietary.
Host:	Mouse
Clonality:	Monoclonal
Clone ID:	IL1B/3993
Isotype:	IgG2b
Light Chains:	kappa
Conjugate:	Unconjugated
Purification:	Protein A/G chromatography.
Concentration:	200 µg/ml
Product Form:	Liquid
Formulation:	Supplied in 10mM Phosphate Buffered Saline with 0.05% BSA and 0.05% Sodium Azide.
Storage:	Shipped at 4°C. Upon delivery aliquot and store at -20°C. Avoid freeze / thaw cycles.

# Anti-IL-1 beta Antibody [IL1B/3993] (A277663)

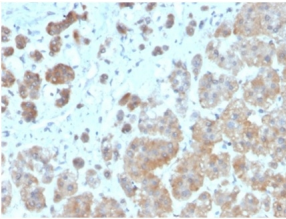
## Specifications continued:

- General Notes:** This monoclonal antibody is also available in a different formulation without BSA and Sodium Azide - Anti-IL-1 beta Antibody [IL1B/3993] - BSA and Azide free (A278251).
- Disclaimer:** This product is for research use only. It is not intended for diagnostic or therapeutic use.

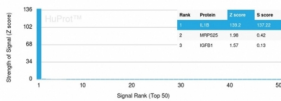
## Images:



Immunohistochemical analysis of formalin-fixed, paraffin-embedded human colon tissue using Anti-IL-1 beta Antibody [IL1B/3993].



Immunohistochemical analysis of formalin-fixed, paraffin-embedded human adrenal gland tissue using Anti-IL-1 beta Antibody [IL1B/3993].



Analysis of protein array containing more than 19,000 full-length human proteins using Anti-IL-1 beta Antibody [IL1B/3993]. Z-Score and S- Score: The Z-score represents the strength of a signal that a monoclonal antibody (MAb) (in combination with a fluorescently-tagged anti-IgG secondary antibody) produces when binding to a particular protein on the HuProt™ array. Z-scores are described in units of standard deviations (SD's) above the mean value of all signals generated on that array. If targets on HuProt™ are arranged in descending order of the Z-score, the S-score is the difference (also in units of SD's) between the Z-score. S-score therefore represents the relative target specificity of a MAb to its intended target; a MAb is considered to be specific to its intended target, if the MAb has an S-score of at least 2.5. For example, if a MAb binds to protein X with a Z-score of 43 and to protein Y with a Z-score of 14, then the S-score for the binding of that MAb to protein X is equal to 29.