

## Anti-IL-15 Antibody [IL15/4353] (A277675)

### Specifications:

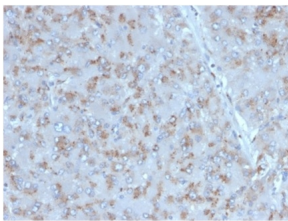
Name:	Anti-IL-15 Antibody [IL15/4353]
Description:	Mouse monoclonal [IL15/4353] antibody to IL-15.
Specificity:	Interleukin-15 (IL-15), also designated IL-T, is a cloned cytokine which shares several biological activities but no sequence homology with IL-2. Human, mouse and simian IL-15 cDNA clones have been isolated and characterized. All 3 species encode a 162 amino acid residue precursor protein containing a 48 amino acid leader that is cleaved to generate the mature form of IL-15. IL-15 stimulates the proliferation of T cells and NK cells, while enhancing B cell expansion and antibody production. Unlike IL-2, IL-15 is not produced by lymphocytes, but appears to be produced by macrophages, epithelial lines, muscle and placenta. IL-15 has also been shown to be a chemoattractant for human blood T lymphocytes and to be able to induce lymphokine-activated killer (LAK) activity in NK cells as well as to be able to induce the generation of cytolytic effector cells. Studies have shown that IL-15 is the only other cytokine that shares the $\hat{I}^2$ signaling subunit of the IL-2R $\hat{I}^3$ . Evidence also suggests that like IL-2, IL-4 and IL-7, IL-15 utilizes the common IL-2R $\hat{I}^3$ subunit.
Applications:	IHC-P
Recommended Dilutions:	IHC-P: 1-2 $\mu$ g/ml
Reactivity:	Human
Immunogen:	Recombinant fragment corresponding to human IL-15. The exact sequence is proprietary.
Host:	Mouse
Clonality:	Monoclonal
Clone ID:	IL15/4353
Isotype:	IgG1
Light Chains:	kappa
Conjugate:	Unconjugated
Purification:	Protein A/G chromatography.
Concentration:	200 $\mu$ g/ml
Product Form:	Liquid
Formulation:	Supplied in 10mM Phosphate Buffered Saline with 0.05% BSA and 0.05% Sodium Azide.

## Anti-IL-15 Antibody [IL15/4353] (A277675)

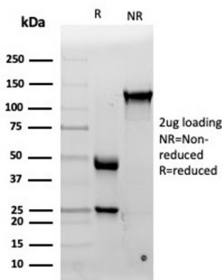
### Specifications continued:

Storage:	Shipped at 4°C. Upon delivery aliquot and store at -20°C. Avoid freeze / thaw cycles.
General Notes:	This monoclonal antibody is also available in a different formulation without BSA and Sodium Azide - Anti-IL-15 Antibody [IL15/4353] - BSA and Azide free (A278263).
Disclaimer:	This product is for research use only. It is not intended for diagnostic or therapeutic use.

### Images:



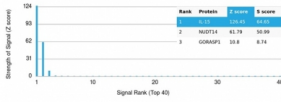
Immunohistochemical analysis of formalin-fixed, paraffin-embedded human adrenal gland tissue using Anti-IL-15 Antibody [IL15/4353].



SDS-PAGE analysis of Anti-IL-15 Antibody [IL15/4353] under non-reduced and reduced conditions; showing intact IgG and intact heavy and light chains, respectively. SDS-PAGE analysis confirms the integrity and purity of the antibody.

## Anti-IL-15 Antibody [IL15/4353] (A277675)

Images continued:



Analysis of protein array containing more than 19,000 full-length human proteins using Anti-IL-15 Antibody [IL15/4353]. Z-Score and S-Score: The Z-score represents the strength of a signal that a monoclonal antibody (MAb) (in combination with a fluorescently-tagged anti-IgG secondary antibody) produces when binding to a particular protein on the HuProt™ array. Z-scores are described in units of standard deviations (SD's) above the mean value of all signals generated on that array. If targets on HuProt™ are arranged in descending order of the Z-score, the S-score is the difference (also in units of SD's) between the Z-score. S-score therefore represents the relative target specificity of a MAb to its intended target; a MAb is considered to be specific to its intended target, if the MAb has an S-score of at least 2.5. For example, if a MAb binds to protein X with a Z-score of 43 and to protein Y with a Z-score of 14, then the S-score for the binding of that MAb to protein X is equal to 29.