

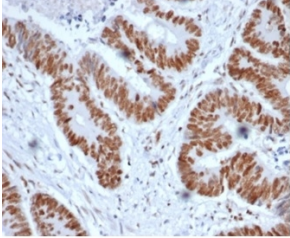
## Anti-MSH2 Antibody [MSH2/6852] (A277717)

### Specifications:

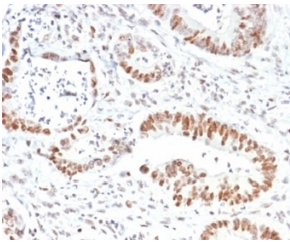
Name:	Anti-MSH2 Antibody [MSH2/6852]
Description:	Mouse monoclonal [MSH2/6852] antibody to MSH2.
Specificity:	Mutations in DNA mismatch repair genes are associated with hereditary nonpolyposis colorectal cancer (HNPCC). Initially, inherited mutations in the MSH2 and MLH1 homologs of the bacterial DNA mismatch repair genes MutS and MutL were found at high frequency in HNPCC and were shown to be associated with microsatellite instability. The demonstration that 10 to 45% of pancreatic, gastric, breast, ovarian and small cell lung cancers also display microsatellite instability has been interpreted to suggest that DNA mismatch repair is not restricted to HNPCC tumors but is a common feature in tumor initiation or progression.
Applications:	WB, IHC-P
Recommended Dilutions:	WB: 1-2 µg/ml, IHC-P: 1-2 µg/ml
Reactivity:	Human
Immunogen:	Recombinant full-length human MSH2 protein.
Host:	Mouse
Clonality:	Monoclonal
Clone ID:	MSH2/6852
Isotype:	IgG1
Light Chains:	kappa
Conjugate:	Unconjugated
Purification:	Protein A/G chromatography.
Concentration:	200 µg/ml
Product Form:	Liquid
Formulation:	Supplied in 10mM Phosphate Buffered Saline with 0.05% BSA and 0.05% Sodium Azide.
Storage:	Shipped at 4°C. Upon delivery aliquot and store at -20°C. Avoid freeze / thaw cycles.
General Notes:	This monoclonal antibody is also available in a different formulation without BSA and Sodium Azide - Anti-MSH2 Antibody [MSH2/6852] - BSA and Azide free (A278305).
Disclaimer:	This product is for research use only. It is not intended for diagnostic or therapeutic use.

## Anti-MSH2 Antibody [MSH2/6852] (A277717)

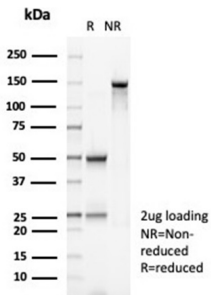
### Images:



Immunohistochemical analysis of formalin-fixed, paraffin-embedded human colon tissue using Anti-MSH2 Antibody [MSH2/6852].



Immunohistochemical analysis of formalin-fixed, paraffin-embedded human colon tissue using Anti-MSH2 Antibody [MSH2/6852].



SDS-PAGE analysis of Anti-MSH2 Antibody [MSH2/6852] under non-reduced and reduced conditions; showing intact IgG and intact heavy and light chains, respectively. SDS-PAGE analysis confirms the integrity and purity of the antibody.