

## Anti-BCL11A Antibody [PCRP-BCL11A-1H3] (A277751)

### Specifications:

Name:	Anti-BCL11A Antibody [PCRP-BCL11A-1H3]
Description:	Mouse monoclonal [PCRP-BCL11A-1H3] antibody to BCL11A.
Specificity:	Bcl-11a (CtIP-1, EVI9, B cell chronic lymphocytic leukemia (CLL)/lymphoma 11A) and Bcl-11b (CtIP-2, RIT1, B cell CLL/lymphoma 11B) genes play crucial roles in lymphopoiesis and influence the progression of hematopoietic malignancies. Disruption of the Bcl-11b locus is linked to T cell acute lymphoblastic leukemia, and the loss of heterozygosity in mice results in T cell lymphoma. Bcl-11 proteins are related C2H2 zinc-finger transcription factors that act as transcriptional repressors. Bcl-11b can interact with the metastasis-associated proteins MTA1 and MTA2 through the amino-terminal region. Bcl-11a is essential for postnatal development and normal lymphopoiesis. The Bcl-11a mouse gene is a common site of retroviral integration in myeloid leukemia, and may function as a leukemia disease gene, in part, through its interaction with Bcl-6.
Applications:	ELISA, IP, Flow Cytometry, IF
Recommended Dilutions:	IP: 1-2 $\mu$ g / 100-500 $\mu$ g proteins, Flow Cytometry: 1-2 $\mu$ g/million cells, IF: 1-2 $\mu$ g/ml
Reactivity:	Human
Cross Reactivity:	This antibody is predicted to cross react with Mouse and Rat.
Immunogen:	Recombinant full-length human BCLL1A protein.
Host:	Mouse
Clonality:	Monoclonal
Clone ID:	PCRP-BCL11A-1H3
Isotype:	IgG1
Conjugate:	Unconjugated
Purification:	Protein A/G chromatography.
Concentration:	200 $\mu$ g/ml
Product Form:	Liquid
Formulation:	Supplied in 10mM Phosphate Buffered Saline with 0.05% BSA and 0.05% Sodium Azide.
Storage:	Shipped at 4°C. Upon delivery aliquot and store at -20°C. Avoid freeze / thaw cycles.

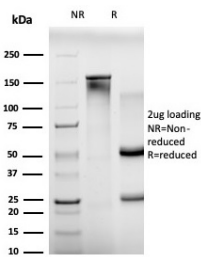
# Anti-BCL11A Antibody [PCRP-BCL11A-1H3] (A277751)

## Specifications continued:

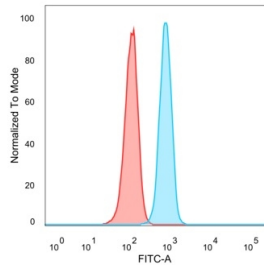
**General Notes:** This monoclonal antibody is also available in a different formulation without BSA and Sodium Azide - Anti-BCL11A Antibody [PCRP-BCL11A-1H3] - BSA and Azide free (A278339).

**Disclaimer:** This product is for research use only. It is not intended for diagnostic or therapeutic use.

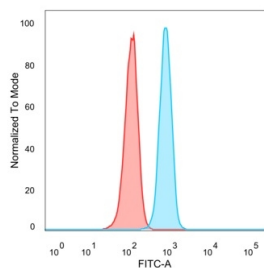
## Images:



SDS-PAGE analysis of Anti-BCL11A Antibody [PCRP-BCL11A-1H3] under non-reduced and reduced conditions; showing intact IgG and intact heavy and light chains, respectively. SDS-PAGE analysis confirms the integrity and purity of the antibody.



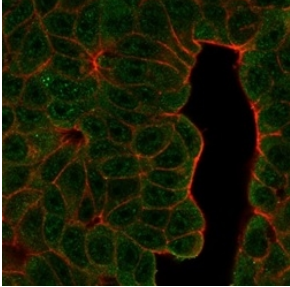
Flow cytometric analysis of PFA-fixed HeLa cells using Anti-BCL11A Antibody [PCRP-BCL11A-1H3] followed by Goat Anti-Mouse IgG (CF® 488) (Blue). Isotype Control (Red).



Flow cytometric analysis of PFA-fixed Raji cells using Anti-BCL11A Antibody [PCRP-BCL11A-1H3] followed by Goat Anti-Mouse IgG (CF® 488) (Blue). Isotype Control (Red).

## Anti-BCL11A Antibody [PCR-P-BCL11A-1H3] (A277751)

Images continued:



Immunofluorescent analysis of PFA-fixed MCF-7 cells stained with Anti-BCL11A Antibody [PCR-P-BCL11A-1H3] followed by Goat Anti-Mouse IgG (CF® 488) (Green). CF® 640A Phalloidin (Red).