

Anti-TREM2 Antibody [TREM2/7210] (A277754)

Specifications:

| | |
|------------------------|--|
| Name: | Anti-TREM2 Antibody [TREM2/7210] |
| Description: | Mouse monoclonal [TREM2/7210] antibody to TREM2. |
| Specificity: | Polycystic lipomembranous osteodysplasia with sclerosing leukoencephalopathy (PLOS), known as Nasu-Hakola disease, is a recessively inherited disease where individuals display early-onset progressive dementia and bone cysts, which leads to death. Mutations in TYROBP (DAP12), which codes for a membrane receptor component in natural-killer and myeloid cells and mutations in triggering receptor expressed on myeloid cells-2 (TREM-2), correlate well to the pathology of PLOS. TREM-2 is a cell surface receptor on human monocyte-derived dendritic cells that forms a receptor signaling complex with DAP12 and triggers activation of the immune response in macrophages and dendritic cells (DC). The TREM-2/DAP12 complex is a molecular promoter of upregulation of CC chemokine receptor 7, partial DC maturation, and DC survival through activation of protein tyrosine kinases and extracellular signal regulated kinase. The human chronic inflammatory TREM-2 gene maps to chromosome 6p21.1 and encodes a 230 amino acid protein. |
| Applications: | IHC-P |
| Recommended Dilutions: | IHC-P: 1-2 µg/ml |
| Reactivity: | Human |
| Immunogen: | Recombinant fragment, around amino acids 1-200, of human TREM2 protein. The exact sequence is proprietary. |
| Host: | Mouse |
| Clonality: | Monoclonal |
| Clone ID: | TREM2/7210 |
| Isotype: | IgG |
| Conjugate: | Unconjugated |
| Purification: | Protein A/G chromatography. |
| Concentration: | 200 µg/ml |
| Product Form: | Liquid |
| Formulation: | Supplied in 10mM Phosphate Buffered Saline with 0.05% BSA and 0.05% Sodium Azide. |
| Storage: | Shipped at 4°C. Upon delivery aliquot and store at -20°C. Avoid freeze / thaw cycles. |

Anti-TREM2 Antibody [TREM2/7210] (A277754)

Specifications continued:

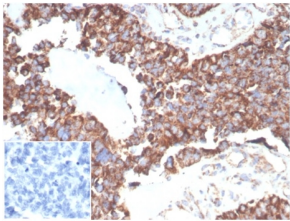
General Notes:

This monoclonal antibody is also available in a different formulation without BSA and Sodium Azide - Anti-TREM2 Antibody [TREM2/7210] - BSA and Azide free (A278342).

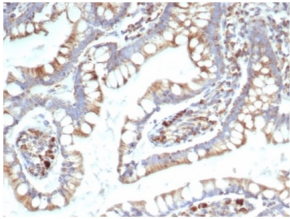
Disclaimer:

This product is for research use only. It is not intended for diagnostic or therapeutic use.

Images:



Immunohistochemical analysis of formalin-fixed, paraffin-embedded human ovarian carcinoma tissue using Anti-TREM2 Antibody [TREM2/7210]. Inset: PBS instead of the primary antibody. Secondary antibody negative control.



Immunohistochemical analysis of formalin-fixed, paraffin-embedded human small intestine tissue using Anti-TREM2 Antibody [TREM2/7210].