

## Anti-SP100 Antibody [PCRP-SP100-1B9] (A277802)

### Specifications:

Name:	Anti-SP100 Antibody [PCRP-SP100-1B9]
Description:	Mouse monoclonal [PCRP-SP100-1B9] antibody to SP100.
Specificity:	The human SP100 gene encodes an autoantigen that co-localizes with PML and NDP52 in distinct nuclear domains, called nuclear dots (NDs) or ND10 nuclear bodies. Papova-, adeno-, and herpesviruses begin their transcription and DNA-replication at NDs, which play a role in autoimmunity, viral infections and in the etiology of acute promyelocytic leukemia. SP-100 is an interferon inducible protein that has two splice variants. One splice variant contains a highly conserved copy of the DNA-binding high mobility group 1 protein sequence, and thus represents a novel HMG-box protein. This alternatively spliced variant of SP-100 has a unique expression and localization pattern that is distinct from the SP-100 full-length protein. The SP100 protein is covalently modified by the small ubiquitin-related protein SUMO-1. SP-100 contains a functional nuclear localization signal and an ND-targeting region, which overlaps with the SP-100 homodimerization domain.
Applications:	ELISA, WB, IF, IP, Flow Cytometry, IHC-P
Recommended Dilutions:	WB: 1-2 µg/ml, IF: 0.5-2 µg/ml, IP: 1-2µg / 100-500µg proteins, FC: 0.5-2 µg/million cells, IHC-P: 1-2 µg/ml
Reactivity:	Human
Immunogen:	Recombinant full-length human SP100 protein.
Host:	Mouse
Clonality:	Monoclonal
Clone ID:	PCRP-SP100-1B9
Isotype:	IgG2b
Conjugate:	Unconjugated
Purification:	Protein A/G chromatography.
Concentration:	200 µg/ml
Product Form:	Liquid
Formulation:	Supplied in 10mM Phosphate Buffered Saline with 0.05% BSA and 0.05% Sodium Azide.
Storage:	Shipped at 4°C. Upon delivery aliquot and store at -20°C. Avoid freeze / thaw cycles.

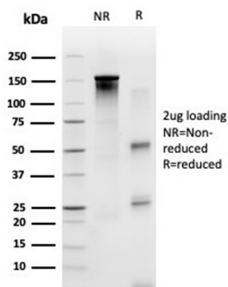
# Anti-SP100 Antibody [PCRP-SP100-1B9] (A277802)

## Specifications continued:

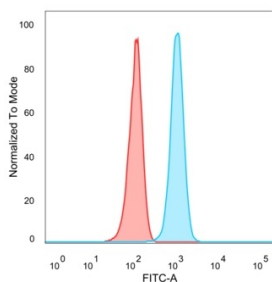
**General Notes:** This monoclonal antibody is also available in a different formulation without BSA and Sodium Azide - Anti-SP100 Antibody [PCRP-SP100-1B9] - BSA and Azide free (A278390).

**Disclaimer:** This product is for research use only. It is not intended for diagnostic or therapeutic use.

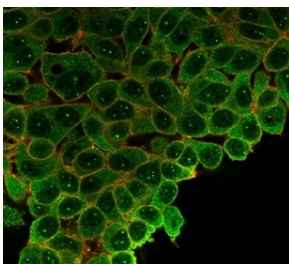
## Images:



SDS-PAGE analysis of Anti-SP100 Antibody [PCRP-SP100-1B9] under non-reduced and reduced conditions; showing intact IgG and intact heavy and light chains, respectively. SDS-PAGE analysis confirms the integrity and purity of the antibody.



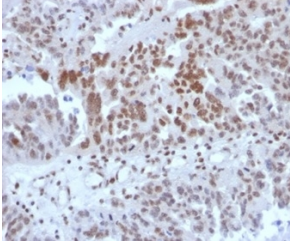
Flow cytometric analysis of PFA-fixed HeLa cells using Anti-SP100 Antibody [PCRP-SP100-1B9] followed by Goat Anti-Mouse IgG (CF® 488) (Blue). Unstained cells (Red).



Immunofluorescent analysis of PFA-fixed HeLa cells stained with Anti-SP100 Antibody [PCRP-SP100-1B9] followed by Goat Anti-Mouse IgG (CF® 488). Membrane stained with Phalloidin.

## Anti-SP100 Antibody [PCRP-SP100-1B9] (A277802)

Images continued:



Immunohistochemical analysis of formalin-fixed, paraffin-embedded human colon using Anti-SP100 Antibody [PCRP-SP100-1B9] at 2 $\mu$ g/ml in PBS for 30 minutes at room temperature.