

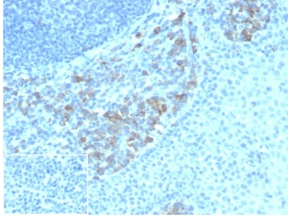
Anti-CD5L Antibody [CD5L/4420] (A277843)

Specifications:

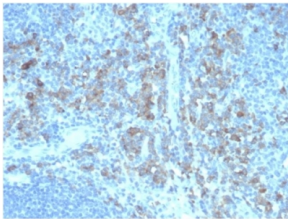
| | |
|------------------------|--|
| Name: | Anti-CD5L Antibody [CD5L/4420] |
| Description: | Mouse monoclonal [CD5L/4420] antibody to CD5L. |
| Specificity: | CD5L (CD5 molecule-like), also known as API6, PRO229, Sp \pm or SP-ALPHA, is a 347 amino acid secreted protein that belongs to the scavenger receptor cysteine-rich (SRCR) family of leukocyte regulating proteins. Expressed in bone marrow, spleen, thymus, lymph node and fetal liver, CD5L is thought to be involved in regulating the immune system via binding to peripheral monocytes and mediating their activation and overall survival. CD5L has three cysteine-rich domains and, in addition to its role in the immune system, may function to inhibit apoptosis and promote macrophage survival. |
| Applications: | IHC-P |
| Recommended Dilutions: | IHC-P: 1-2 μ g/ml |
| Reactivity: | Human |
| Immunogen: | Recombinant fragment, around amino acids 269-366, of human CD5 protein. The exact sequence is proprietary. |
| Host: | Mouse |
| Clonality: | Monoclonal |
| Clone ID: | CD5L/4420 |
| Isotype: | IgG1 |
| Light Chains: | kappa |
| Conjugate: | Unconjugated |
| Purification: | Protein A/G chromatography. |
| Concentration: | 200 μ g/ml |
| Product Form: | Liquid |
| Formulation: | Supplied in 10mM Phosphate Buffered Saline with 0.05% BSA and 0.05% Sodium Azide. |
| Storage: | Shipped at 4°C. Upon delivery aliquot and store at -20°C. Avoid freeze / thaw cycles. |
| General Notes: | This monoclonal antibody is also available in a different formulation without BSA and Sodium Azide - Anti-CD5L Antibody [CD5L/4420] - BSA and Azide free (A278431). |
| Disclaimer: | This product is for research use only. It is not intended for diagnostic or therapeutic use. |

Anti-CD5L Antibody [CD5L/4420] (A277843)

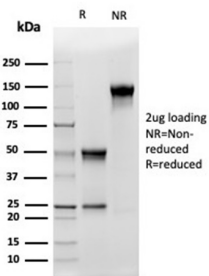
Images:



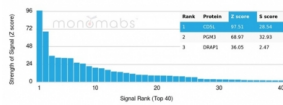
Immunohistochemical analysis of formalin-fixed, paraffin-embedded human tonsil tissue using Anti-CD5L Antibody [CD5L/4420]. Inset: PBS instead of the primary antibody. Secondary antibody negative control.



Immunohistochemical analysis of formalin-fixed, paraffin-embedded human tonsil using Anti-CD5L Antibody [CD5L/4420] at 2µg/ml in PBS for 30 minutes at room temperature.



SDS-PAGE analysis of Anti-CD5L Antibody [CD5L/4420] under non-reduced and reduced conditions; showing intact IgG and intact heavy and light chains, respectively. SDS-PAGE analysis confirms the integrity and purity of the antibody.



Analysis of protein array containing more than 19,000 full-length human proteins using Anti-CD5L Antibody [CD5L/4420]. Z-Score and S- Score: The Z-score represents the strength of a signal that a monoclonal antibody (MAb) (in combination with a fluorescently-tagged anti-IgG secondary antibody) produces when binding to a particular protein on the HuProt™ array. Z-scores are described in units of standard deviations (SD's) above the mean value of all signals generated on that array. If targets on HuProt™ are arranged in descending order of the Z-score, the S-score is the difference (also in units of SD's) between the Z-score. S-score therefore represents the relative target specificity of a MAb to its intended target; a MAb is considered to be specific to its intended target, if the MAb has an S-score of at least 2.5. For example, if a MAb binds to protein X with a Z-score of 43 and to protein Y with a Z-score of 14, then the S-score for the binding of that MAb to protein X is equal to 29.