

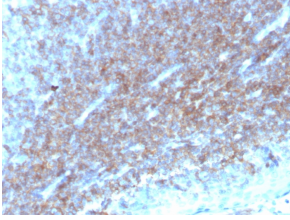
## Anti-CD48 Antibody [CD48/4784] (A277858)

### Specifications:

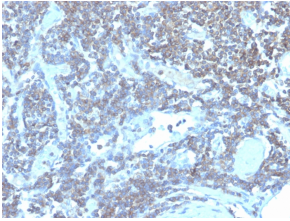
Name:	Anti-CD48 Antibody [CD48/4784]
Description:	Mouse monoclonal [CD48/4784] antibody to CD48.
Specificity:	This antibody recognizes human CD48, a 45kDa glycosyl phosphatidyl-inositol (GPI)-anchored cell surface protein. CD48 is strongly expressed on lymphocytes and monocytes and weakly on granulocytes but is absent on platelets, fibroblasts, epithelium and endothelium. CD48 is one of marker for detecting the defects of GPI anchoring structure on the patients with paroxysmal nocturnal hemoglobinuria (PNH) and serves as a low affinity ligand for CD2.
Applications:	WB, IHC-P
Recommended Dilutions:	WB: 2-4 µg/ml, IHC-P: 1-2 µg/ml
Reactivity:	Human
Immunogen:	Recombinant fragment, around amino acids 59-178, of human CD48 protein. The exact sequence is proprietary.
Host:	Mouse
Clonality:	Monoclonal
Clone ID:	CD48/4784
Isotype:	IgG2c
Light Chains:	kappa
Conjugate:	Unconjugated
Purification:	Protein A/G chromatography.
Concentration:	200 µg/ml
Product Form:	Liquid
Formulation:	Supplied in 10mM Phosphate Buffered Saline with 0.05% BSA and 0.05% Sodium Azide.
Storage:	Shipped at 4°C. Upon delivery aliquot and store at -20°C. Avoid freeze / thaw cycles.
General Notes:	This monoclonal antibody is also available in a different formulation without BSA and Sodium Azide - Anti-CD48 Antibody [CD48/4784] - BSA and Azide free (A278446).
Disclaimer:	This product is for research use only. It is not intended for diagnostic or therapeutic use.

## Anti-CD48 Antibody [CD48/4784] (A277858)

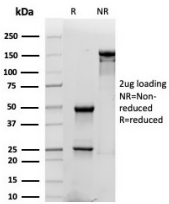
### Images:



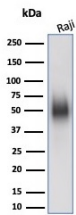
Immunohistochemical analysis of formalin-fixed, paraffin-embedded human tonsil tissue using Anti-CD48 Antibody [CD48/4784].



Immunohistochemical analysis of formalin-fixed, paraffin-embedded human lymph node tissue using Anti-CD48 Antibody [CD48/4784].



SDS-PAGE analysis of Anti-CD48 Antibody [CD48/4784] under non-reduced and reduced conditions; showing intact IgG and intact heavy and light chains, respectively. SDS-PAGE analysis confirms the integrity and purity of the antibody.



Western blot analysis of Raji cell line lysate using Anti-CD48 Antibody [CD48/4784].