

Anti-Synaptophysin Antibody [rSYP/6856] (A277924)

Specifications:

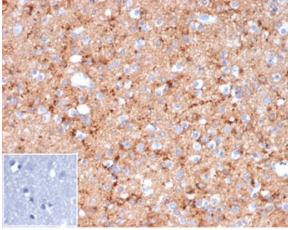
Name:	Anti-Synaptophysin Antibody [rSYP/6856]
Description:	Recombinant mouse monoclonal [rSYP/6856] antibody to Synaptophysin.
Specificity:	This antibody recognizes a protein of 38kDa that is identified as synaptophysin. It is an N-glycosylated integral membrane protein found in neurons and endocrine cells. Synaptophysin contains four transmembrane domains and may function as a gap junction-like channel. This antibody identifies normal neuroendocrine cells and neuroendocrine neoplasms. Diffuse, finely granular, cytoplasmic staining is observed, which probably correlates with the distribution of the antigen within neurosecretory vesicles. Synaptophysin is an independent, broad-range marker of neural and neuroendocrine differentiation.
Applications:	IHC-P
Recommended Dilutions:	IHC-P: 1-2 µg/ml
Reactivity:	Human
Immunogen:	Recombinant fragment, around amino acids 224-313, of human Synaptophysin protein. The exact sequence is proprietary.
Host:	Mouse
Clonality:	Monoclonal
Clone ID:	rSYP/6856
Isotype:	IgG1
Light Chains:	kappa
Conjugate:	Unconjugated
Purification:	Protein A/G chromatography.
Concentration:	200 µg/ml
Product Form:	Liquid
Formulation:	Supplied in 10mM Phosphate Buffered Saline with 0.05% BSA and 0.05% Sodium Azide.
Storage:	Shipped at 4°C. Upon delivery aliquot and store at -20°C. Avoid freeze / thaw cycles.
General Notes:	This monoclonal antibody is also available in a different formulation without BSA and Sodium Azide - Anti-Synaptophysin Antibody [rSYP/6856] - BSA and Azide free (A278512).

Anti-Synaptophysin Antibody [rSYP/6856] (A277924)

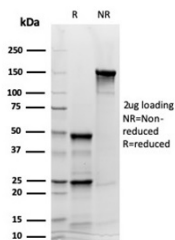
Specifications continued:

Disclaimer: This product is for research use only. It is not intended for diagnostic or therapeutic use.

Images:



Immunohistochemical analysis of formalin-fixed, paraffin-embedded human brain tissue using Anti-Synaptophysin Antibody [rSYP/6856] at 2µg/ml. Inset: PBS instead of the primary antibody. Secondary antibody negative control.



SDS-PAGE analysis of Anti-Synaptophysin Antibody [rSYP/6856] under non-reduced and reduced conditions; showing intact IgG and intact heavy and light chains, respectively. SDS-PAGE analysis confirms the integrity and purity of the antibody.