

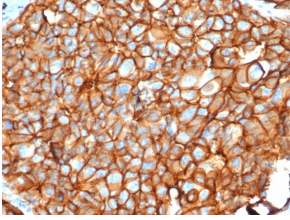
Anti-HER2 Antibody [ERBB2/4376R] (A277975)

Specifications:

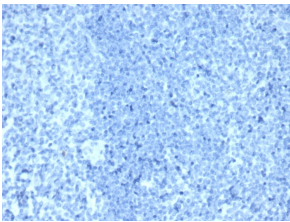
Name:	Anti-HER2 Antibody [ERBB2/4376R]
Description:	Recombinant rabbit monoclonal [ERBB2/4376R] antibody to HER2.
Specificity:	This antibody recognizes a protein of 185kDa, which is identified as c-erbB-2/HER-2/neu. Its epitope is localized in the extracellular domain. C-erbB-2/HER-2 is a member of the EGFR family. This MAb is specific and shows minimal cross-reaction with other members of the EGFR-family. Receptors of this family are located on the plasma membrane and consist of an extracellular ligand-binding domain that is connected to a large intracellular domain by a single transmembrane sequence. c-erbB-2/HER-2 protein is over-expressed in a variety of carcinomas especially those of breast and ovary.
Applications:	Flow Cytometry, IF, IHC-P
Recommended Dilutions:	Flow Cytometry: 1-2 µg/million cells, IF: 1-2 µg/ml, IHC-P: 1-2 µg/ml
Reactivity:	Human
Immunogen:	Recombinant fragment encoding the extracellular domain of human c-erbB2.
Host:	Rabbit
Clonality:	Monoclonal
Clone ID:	ERBB2/4376R
Isotype:	IgG
Conjugate:	Unconjugated
Purification:	Protein A/G chromatography.
Concentration:	200 µg/ml
Product Form:	Liquid
Formulation:	Supplied in 10mM Phosphate Buffered Saline with 0.05% BSA and 0.05% Sodium Azide.
Storage:	Shipped at 4°C. Upon delivery aliquot and store at -20°C. Avoid freeze / thaw cycles.
General Notes:	This monoclonal antibody is also available in a different formulation without BSA and Sodium Azide - Anti-HER2 Antibody [ERBB2/4376R] - BSA and Azide free (A278563).
Disclaimer:	This product is for research use only. It is not intended for diagnostic or therapeutic use.

Anti-HER2 Antibody [ERBB2/4376R] (A277975)

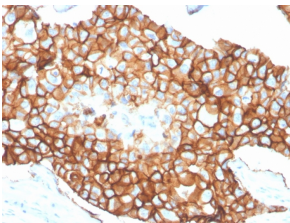
Images:



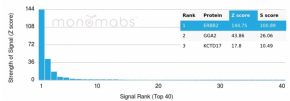
Immunohistochemical analysis of formalin-fixed, paraffin-embedded human breast carcinoma using Anti-HER2 Antibody [ERBB2/4376R] at 2µg/ml in PBS for 30 minutes at room temperature.



Negative Tissue Control: Immunohistochemical analysis of formalin-fixed, paraffin-embedded human tonsil using Anti-HER2 Antibody [ERBB2/4376R] at 2µg/ml in PBS for 30 minutes at room temperature.



Immunohistochemical analysis of formalin-fixed, paraffin-embedded human breast carcinoma using Anti-HER2 Antibody [ERBB2/4376R] at 2µg/ml in PBS for 30 minutes at room temperature.



Analysis of protein array containing more than 19,000 full-length human proteins using Anti-HER2 Antibody [ERBB2/4376R]. Z-Score and S-Score: The Z-score represents the strength of a signal that a monoclonal antibody (MAb) (in combination with a fluorescently-tagged anti-IgG secondary antibody) produces when binding to a particular protein on the HuProt™ array. Z-scores are described in units of standard deviations (SD's) above the mean value of all signals generated on that array. If targets on HuProt™ are arranged in descending order of the Z-score, the S-score is the difference (also in units of SD's) between the Z-score. S-score therefore represents the relative target specificity of a MAb to its intended target; a MAb is considered to be specific to its intended target, if the MAb has an S-score of at least 2.5. For example, if a MAb binds to protein X with a Z-score of 43 and to protein Y with a Z-score of 14, then the S-score for the binding of that MAb to protein X is equal to 29.