

Anti-Inhibin alpha Antibody [INHA/6598R] (A278010)

Specifications:

Name:	Anti-Inhibin alpha Antibody [INHA/6598R]
Description:	Recombinant rabbit monoclonal [INHA/6598R] antibody to Inhibin alpha.
Specificity:	It recognizes a 47kDa protein, which is identified as alpha sub-unit of Inhibin. It is a gonadal protein that preferentially suppresses the secretion of pituitary follicle-stimulating hormone (FSH). Inhibin comprises two subunits, Inhibin A and Inhibin B. Each subunit consists of the same $\hat{1}\pm$ subunit, covalently linked to 1 of 2 distinct subunits, $\hat{1}^2$ - $\hat{1}\pm$ or $\hat{1}^2$ - $\hat{1}^2$. Originally isolated from ovarian follicular fluid and characterized as a disulphide-linked dimeric glycoprotein, inhibin belongs to the transforming growth factor $\hat{1}^2$ (TFG $\hat{1}^2$) superfamily. Antibodies against Inhibin are useful in making a differentiation between adrenal cortical tumors and renal cell carcinoma. Sex cord stromal tumors of the ovary as well as trophoblastic tumors also demonstrate cytoplasmic positivity. Inhibin antibody is also used to make the differential diagnosis of intra-uterine vs. ectopic pregnancy in endometrial curetting.
Applications:	IHC-P
Recommended Dilutions:	IHC-P: 1-2 μ g/ml
Reactivity:	Human
Immunogen:	Recombinant fragment, around amino acids 233-362, of human Inhibin alpha protein. The exact sequence is proprietary.
Host:	Rabbit
Clonality:	Monoclonal
Clone ID:	INHA/6598R
Isotype:	IgG
Conjugate:	Unconjugated
Purification:	Protein A/G chromatography.
Concentration:	200 μ g/ml
Product Form:	Liquid
Formulation:	Supplied in 10mM Phosphate Buffered Saline with 0.05% BSA and 0.05% Sodium Azide.
Storage:	Shipped at 4°C. Upon delivery aliquot and store at -20°C. Avoid freeze / thaw cycles.

Anti-Inhibin alpha Antibody [INHA/6598R] (A278010)

Specifications continued:

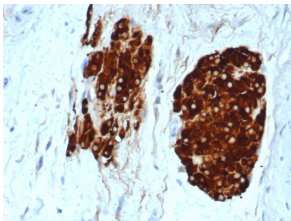
General Notes:

This monoclonal antibody is also available in a different formulation without BSA and Sodium Azide - Anti-Inhibin alpha Antibody [INHA/6598R] - BSA and Azide free (A278598).

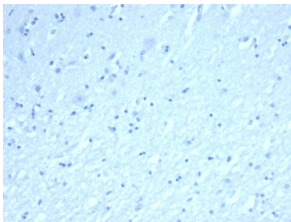
Disclaimer:

This product is for research use only. It is not intended for diagnostic or therapeutic use.

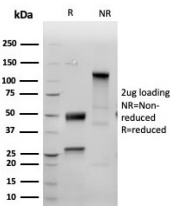
Images:



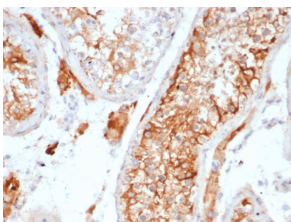
Immunohistochemical analysis of formalin-fixed, paraffin-embedded human testicular carcinoma using Anti-Inhibin alpha Antibody [INHA/6598R] at 2µg/ml in PBS for 30 minutes at room temperature.



Negative Tissue Control: Immunohistochemical analysis of formalin-fixed, paraffin-embedded human brain using Anti-Inhibin alpha Antibody [INHA/6598R] at 2µg/ml in PBS for 30 minutes at room temperature.



SDS-PAGE analysis of Anti-Inhibin alpha Antibody [INHA/6598R] under non-reduced and reduced conditions; showing intact IgG and intact heavy and light chains, respectively. SDS-PAGE analysis confirms the integrity and purity of the antibody.



Immunohistochemical analysis of formalin-fixed, paraffin-embedded human testis tissue using Anti-Inhibin alpha Antibody [INHA/6598R].