

## Anti-Cytokeratin 7 Antibody [KRT7/4387R] (A278015)

### Specifications:

Name:	Anti-Cytokeratin 7 Antibody [KRT7/4387R]
Description:	Recombinant rabbit monoclonal [KRT7/4387R] antibody to Cytokeratin 7.
Specificity:	Cytokeratin 7 in humans is a protein encoded by the KRT7 gene. It is always as a keratin pair with Cytokeratin 19. Cytokeratin 7 is expressed on most ductal and glandular epithelium including lung, breast, bladder and female genital tract, but not in most gastrointestinal epithelium, prostate, hepatocyte and squamous epithelium. In tumor tissues, its expression is absent in colon cancer, prostate cancer and squamous carcinomas. Cytokeratin 7 is often used in concert with Cytokeratin 20 and CDX-2 to aid in distinguishing ovarian, pulmonary and breast carcinomas (CK7+) from colon carcinomas (CK7-).
Applications:	IHC-P
Recommended Dilutions:	IHC-P: 1-2 µg/ml
Reactivity:	Human
Immunogen:	Recombinant fragment, around amino acids 1-100, of human Cytokeratin 7. The exact sequence is proprietary.
Host:	Rabbit
Clonality:	Monoclonal
Clone ID:	KRT7/4387R
Isotype:	IgG
Light Chains:	kappa
Conjugate:	Unconjugated
Purification:	Protein A/G chromatography.
Concentration:	200 µg/ml
Product Form:	Liquid
Formulation:	Supplied in 10mM Phosphate Buffered Saline with 0.05% BSA and 0.05% Sodium Azide.
Storage:	Shipped at 4°C. Upon delivery aliquot and store at -20°C. Avoid freeze / thaw cycles.
General Notes:	This monoclonal antibody is also available in a different formulation without BSA and Sodium Azide - Anti-Cytokeratin 7 Antibody [KRT7/4387R] - BSA and Azide free (A278603).

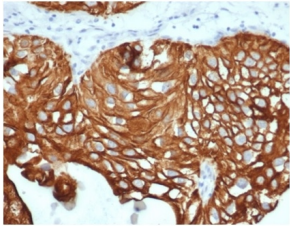
## Anti-Cytokeratin 7 Antibody [KRT7/4387R] (A278015)

### Specifications continued:

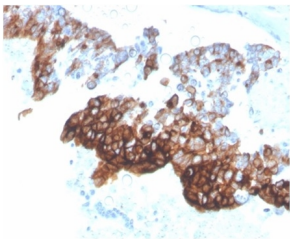
#### Disclaimer:

This product is for research use only. It is not intended for diagnostic or therapeutic use.

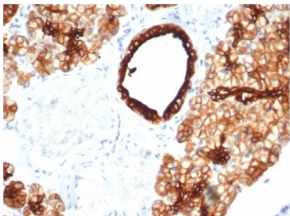
### Images:



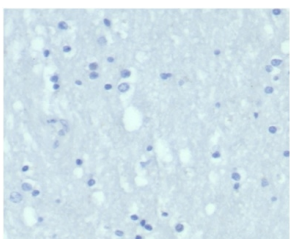
Immunohistochemical analysis of formalin-fixed, paraffin-embedded human bladder carcinoma tissue using Anti-Cytokeratin 7 Antibody [KRT7/4387R].



Immunohistochemical analysis of formalin-fixed, paraffin-embedded human ovarian carcinoma tissue using Anti-Cytokeratin 7 Antibody [KRT7/4387R].



Immunohistochemical analysis of formalin-fixed, paraffin-embedded human salivary gland tissue using Anti-Cytokeratin 7 Antibody [KRT7/4387R].



Negative Tissue Control: Immunohistochemical analysis of formalin-fixed, paraffin-embedded human brain using Anti-Cytokeratin 7 Antibody [KRT7/4387R] at 2µg/ml in PBS for 30 minutes at room temperature.