

Anti-FOXL1 Antibody [PCRP-FOXL1-1F8] - BSA and Azide free (A278193)

Specifications:

Name:	Anti-FOXL1 Antibody [PCRP-FOXL1-1F8] - BSA and Azide free
Description:	Mouse monoclonal [PCRP-FOXL1-1F8] antibody to FOXL1.
Specificity:	FOXL1 is a 337 amino acid protein encoded by the mouse gene FOXL1. FOXL1 belongs to the forkhead family and contains one forkhead DNA-binding domain. The HNF3/forkhead family includes a large number of transcription factors that share a structurally related DNA binding domain. forkhead factors are known to play important roles both during development and in adults. FOXL1 is a winged helix transcriptional regulator expressed in the mesenchymal layer of developing and mature gastrointestinal tract. FOXL1-deficient mice exhibit various defects not only in the epithelial layer of the gastrointestinal tract but also in gut-associated lymphoid tissues. In the small intestine of FOXL1-deficient mice, the formation of Peyer's patches is affected, particularly in the caudal region. FOXL1 is a mesenchymal modifier of the Adenomatous Polyposis Coli (APC) gene products and plays a key role in gastrointestinal tumorigenesis.
Applications:	IP, Flow Cytometry, IF, WB, IHC-P
Recommended Dilutions:	IP: 1-2µg / 100-500µg proteins, Flow Cytometry: 1-2 µg/million cells, IF: 1-2 µg/ml, WB: 1-2 µg/ml, IHC-P: 1-2 µg/ml
Reactivity:	Human
Cross Reactivity:	This antibody is predicted to cross react with Rat.
Immunogen:	Recombinant fragment, around amino acids 104-258, of human FOXL1 protein. The exact sequence is proprietary.
Host:	Mouse
Clonality:	Monoclonal
Clone ID:	PCRP-FOXL1-1F8
Isotype:	IgG1
Conjugate:	Unconjugated
Purification:	Protein A/G chromatography.
Concentration:	1 mg/ml
Product Form:	Liquid
Formulation:	Supplied in 10mM Phosphate Buffered Saline; without Sodium Azide and carrier free.
Storage:	Shipped at 4°C. Upon delivery aliquot and store at -20°C. Avoid freeze / thaw cycles.

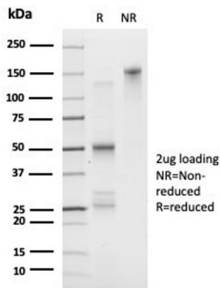
Anti-FOXL1 Antibody [PCRP-FOXL1-1F8] - BSA and Azide free (A278193)

Specifications continued:

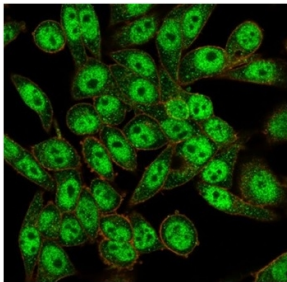
General Notes: This monoclonal antibody is also available in a different formulation with BSA and Sodium Azide - Anti-FOXL1 Antibody [PCRP-FOXL1-1F8] (A277605).

Disclaimer: This product is for research use only. It is not intended for diagnostic or therapeutic use.

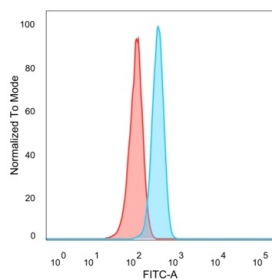
Images:



SDS-PAGE analysis of Anti-FOXL1 Antibody [PCRP-FOXL1-1F8] under non-reduced and reduced conditions; showing intact IgG and intact heavy and light chains, respectively. SDS-PAGE analysis confirms the integrity and purity of the antibody.



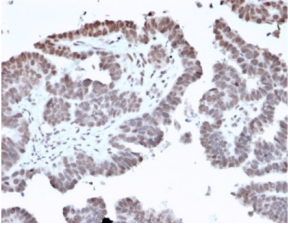
Immunofluorescent analysis of PFA-fixed HeLa cells stained with Anti-FOXL1 Antibody [PCRP-FOXL1-1F8] followed by Goat Anti-Mouse IgG (CF® 488) (Green). CF® 640A Phalloidin (Red).



Flow cytometric analysis of PFA-fixed HeLa cells using Anti-FOXL1 Antibody [PCRP-FOXL1-1F8] followed by Goat Anti-Mouse IgG (CF® 488) (Blue). Unstained cells (Red).

Anti-FOXL1 Antibody [PCRP-FOXL1-1F8] - BSA and Azide free (A278193)

Images continued:



Immunohistochemical analysis of formalin-fixed, paraffin-embedded human prostate tissue using Anti-FOXL1 Antibody [PCRP-FOXL1-1F8] at 2 μ g/ml.