

Anti-Nucleolin Antibody [NCL/7338] - BSA and Azide free (A278310)

Specifications:

Name:	Anti-Nucleolin Antibody [NCL/7338] - BSA and Azide free
Description:	Mouse monoclonal [NCL/7338] antibody to Nucleolin.
Specificity:	This antibody recognizes a protein of ~76kDa, which is identified as Nucleolin (NCL). It is the major nucleolar phosphoprotein of growing eukaryotic cells. NCL is located mainly in dense fibrillar regions of the nucleolus. It is found associated with intranucleolar chromatin and pre-ribosomal particles. Human NCL gene consists of 14 exons with 13 introns and spans approximately 11kb. It induces chromatin decondensation by binding to histone H1. It is thought to play a role in pre-rRNA transcription and ribosome assembly. This MAb can be used to stain the nucleoli in cell or tissue preparations and can be used as a marker of the nucleoli in subcellular fractions. It produces a speckled pattern in the nuclei of cells of normal and malignant cells and may be used to stain the nucleoli of cells in fixed or frozen tissue sections. It can be used with paraformaldehyde fixed frozen tissue or cell preparations and formalin fixed, paraffin-embedded tissue sections.
Applications:	IHC-P
Recommended Dilutions:	IHC-P: 1-2 µg/ml
Reactivity:	Human
Cross Reactivity:	This antibody does not cross react with Mouse, Feline, Bovine, Canine, or Horse.
Immunogen:	Recombinant full-length human NCL protein.
Host:	Mouse
Clonality:	Monoclonal
Clone ID:	NCL/7338
Isotype:	IgG2b
Light Chains:	kappa
Conjugate:	Unconjugated
Purification:	Protein A/G chromatography.
Concentration:	1 mg/ml
Product Form:	Liquid
Formulation:	Supplied in 10mM Phosphate Buffered Saline; without Sodium Azide and carrier free.
Storage:	Shipped at 4°C. Upon delivery aliquot and store at -20°C. Avoid freeze / thaw cycles.

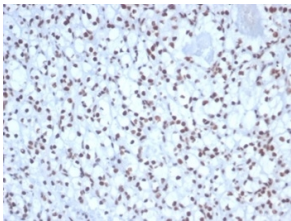
Anti-Nucleolin Antibody [NCL/7338] - BSA and Azide free (A278310)

Specifications continued:

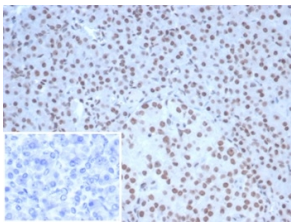
General Notes: This monoclonal antibody is also available in a different formulation with BSA and Sodium Azide - Anti-Nucleolin Antibody [NCL/7338] (A277722).

Disclaimer: This product is for research use only. It is not intended for diagnostic or therapeutic use.

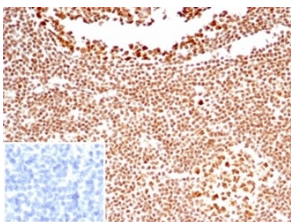
Images:



Immunohistochemical analysis of formalin-fixed, paraffin-embedded human kidney tissue using Anti-Nucleolin Antibody [NCL/7338].



Immunohistochemical analysis of formalin-fixed, paraffin-embedded human pancreas tissue using Anti-Nucleolin Antibody [NCL/7338].



Immunohistochemical analysis of formalin-fixed, paraffin-embedded human tonsil tissue using Anti-Nucleolin Antibody [NCL/7338]. Inset: PBS instead of the primary antibody. Secondary antibody negative control.