

Anti-TREM2 Antibody [TREM2/7210] - BSA and Azide free (A278342)

Specifications:

Name:	Anti-TREM2 Antibody [TREM2/7210] - BSA and Azide free
Description:	Mouse monoclonal [TREM2/7210] antibody to TREM2.
Specificity:	Polycystic lipomembranous osteodysplasia with sclerosing leukoencephalopathy (PLOS), known as Nasu-Hakola disease, is a recessively inherited disease where individuals display early-onset progressive dementia and bone cysts, which leads to death. Mutations in TYROBP (DAP12), which codes for a membrane receptor component in natural-killer and myeloid cells and mutations in triggering receptor expressed on myeloid cells-2 (TREM-2), correlate well to the pathology of PLOS. TREM-2 is a cell surface receptor on human monocyte-derived dendritic cells that forms a receptor signaling complex with DAP12 and triggers activation of the immune response in macrophages and dendritic cells (DC). The TREM-2/DAP12 complex is a molecular promoter of upregulation of CC chemokine receptor 7, partial DC maturation, and DC survival through activation of protein tyrosine kinases and extracellular signal regulated kinase. The human chronic inflammatory TREM-2 gene maps to chromosome 6p21.1 and encodes a 230 amino acid protein.
Applications:	IHC-P
Recommended Dilutions:	IHC-P: 1-2 µg/ml
Reactivity:	Human
Immunogen:	Recombinant fragment, around amino acids 1-200, of human TREM2 protein. The exact sequence is proprietary.
Host:	Mouse
Clonality:	Monoclonal
Clone ID:	TREM2/7210
Isotype:	IgG
Conjugate:	Unconjugated
Purification:	Protein A/G chromatography.
Concentration:	1 mg/ml
Product Form:	Liquid
Formulation:	Supplied in 10mM Phosphate Buffered Saline; without Sodium Azide and carrier free.
Storage:	Shipped at 4°C. Upon delivery aliquot and store at -20°C. Avoid freeze / thaw cycles.

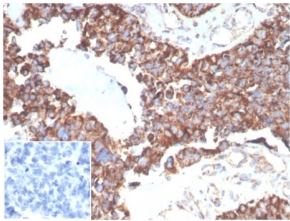
Anti-TREM2 Antibody [TREM2/7210] - BSA and Azide free (A278342)

Specifications continued:

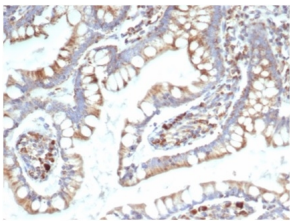
General Notes: This monoclonal antibody is also available in a different formulation with BSA and Sodium Azide - Anti-TREM2 Antibody [TREM2/7210] (A277754).

Disclaimer: This product is for research use only. It is not intended for diagnostic or therapeutic use.

Images:



Immunohistochemical analysis of formalin-fixed, paraffin-embedded human ovarian carcinoma tissue using Anti-TREM2 Antibody [TREM2/7210]. Inset: PBS instead of the primary antibody. Secondary antibody negative control.



Immunohistochemical analysis of formalin-fixed, paraffin-embedded human small intestine tissue using Anti-TREM2 Antibody [TREM2/7210].