

## Anti-QKI Antibody [PCRP-QKI-2F10] - BSA and Azide free (A278440)

### Specifications:

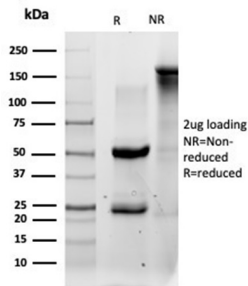
Name:	Anti-QKI Antibody [PCRP-QKI-2F10] - BSA and Azide free
Description:	Mouse monoclonal [PCRP-QKI-2F10] antibody to QKI.
Specificity:	QKI, also known as HKQ, QK, QK3 or quaking, is a 341 amino acid protein that localizes to both the cytoplasm and the nucleus and contains one KH domain. Expressed in the frontal cortex of the brain, QKI functions as an RNA-binding protein that plays an important role in myelination and specifically binds to the RNA core sequence 5'-NACUAAY-N(1,20)-UAAY-3'. Additionally, QKI regulates pre-mRNA splicing, and mRNA export and is involved in protecting and promoting the stability of select mRNAs. QKI may be methylated by PRMT1 and may also be phosphorylated at its C-terminus, an event that decreases QKI mRNA-binding affinity. Defects or deletions in the gene encoding QKI are associated with astrocytic tumors and may be involved in the pathogenesis of schizophrenia. Multiple isoforms of QKI exist due to alternative splicing events.
Applications:	ELISA, Flow Cytometry, IP, IF, WB
Recommended Dilutions:	Flow Cytometry: 1-2 µg/million cells, IP: 1-2µg / 100-500µg proteins, IF: 1-2 µg/ml, WB: 1-2 µg/ml
Reactivity:	Human
Immunogen:	Recombinant full-length human QKI protein.
Host:	Mouse
Clonality:	Monoclonal
Clone ID:	PCRP-QKI-2F10
Isotype:	IgG2c
Conjugate:	Unconjugated
Purification:	Protein A/G chromatography.
Concentration:	1 mg/ml
Product Form:	Liquid
Formulation:	Supplied in 10mM Phosphate Buffered Saline; without Sodium Azide and carrier free.
Storage:	Shipped at 4°C. Upon delivery aliquot and store at -20°C. Avoid freeze / thaw cycles.
General Notes:	This monoclonal antibody is also available in a different formulation with BSA and Sodium Azide - Anti-QKI Antibody [PCRP-QKI-2F10] (A277852).

# Anti-QKI Antibody [PCRP-QKI-2F10] - BSA and Azide free (A278440)

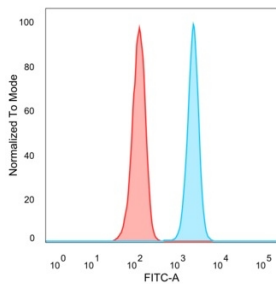
## Specifications continued:

**Disclaimer:** This product is for research use only. It is not intended for diagnostic or therapeutic use.

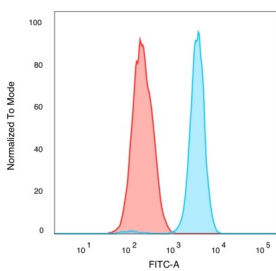
## Images:



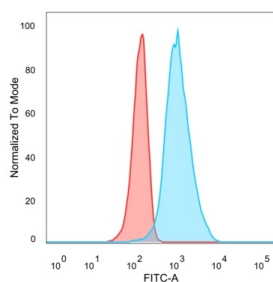
SDS-PAGE analysis of Anti-QKI Antibody [PCRP-QKI-2F10] under non-reduced and reduced conditions; showing intact IgG and intact heavy and light chains, respectively. SDS-PAGE analysis confirms the integrity and purity of the antibody.



Flow cytometric analysis of PFA-fixed HeLa cells using Anti-QKI Antibody [PCRP-QKI-2F10] followed by Goat Anti-Mouse IgG (CF® 488) (Blue). Isotype Control (Red).



Flow cytometric analysis of PFA-fixed K562 cells using Anti-QKI Antibody [PCRP-QKI-2F10] followed by Goat Anti-Mouse IgG (CF® 488) (Blue). Isotype Control (Red).



Flow cytometric analysis of PFA-fixed U87 cells using Anti-QKI Antibody [PCRP-QKI-2F10] followed by Goat Anti-Mouse IgG (CF® 488) (Blue). Isotype Control (Red).