

## Anti-IRF3 Antibody [PCRP-IRF3-3B2] - BSA and Azide free (A278458)

### Specifications:

Name:	Anti-IRF3 Antibody [PCRP-IRF3-3B2] - BSA and Azide free
Description:	Mouse monoclonal [PCRP-IRF3-3B2] antibody to IRF3.
Specificity:	Interferon regulatory factor-1 (IRF-1) and IRF-2 have been identified as novel DNA-binding factors that function as regulators of both type I interferon (interferon- $\beta$ and $\gamma$ ) and interferon-inducible genes. The two factors are structurally related, particularly in their N-terminal regions, which confer DNA binding specificity. In addition, both bind to the same sequence within the promoters of interferon- $\beta$ and interferon- $\gamma$ genes. IRF-1 functions as an activator of interferon transcription, while IRF-2 binds to the same cis elements and represses IRF-1 action. IRF-1 and IRF-2 have been reported to act in a mutually antagonistic manner in regulating cell growth; overexpression of the repressor IRF-2 leads to cell transformation while concomitant overexpression of IRF-1 causes reversion. IRF-1 and IRF-2 are members of a larger family of DNA binding proteins that includes IRF-3, IRF-4, IRF-5, IRF-6, IRF-7, ISGF-3 $\beta$ 48 and IFN consensus sequence-binding protein (ICSBP).
Applications:	WB, IF
Recommended Dilutions:	WB: 2-4 $\mu$ g/ml, IF: 1-2 $\mu$ g/ml
Reactivity:	Human
Immunogen:	Recombinant full-length human IRF3 protein.
Host:	Mouse
Clonality:	Monoclonal
Clone ID:	PCRP-IRF3-3B2
Isotype:	IgG1
Light Chains:	kappa
Conjugate:	Unconjugated
Purification:	Protein A/G chromatography.
Concentration:	1 mg/ml
Product Form:	Liquid
Formulation:	Supplied in 10mM Phosphate Buffered Saline; without Sodium Azide and carrier free.
Storage:	Shipped at 4°C. Upon delivery aliquot and store at -20°C. Avoid freeze / thaw cycles.

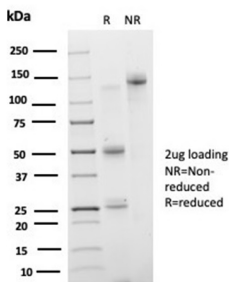
# Anti-IRF3 Antibody [PCRP-IRF3-3B2] - BSA and Azide free (A278458)

## Specifications continued:

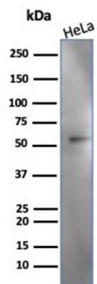
**General Notes:** This monoclonal antibody is also available in a different formulation with BSA and Sodium Azide - Anti-IRF3 Antibody [PCRP-IRF3-3B2] (A277870).

**Disclaimer:** This product is for research use only. It is not intended for diagnostic or therapeutic use.

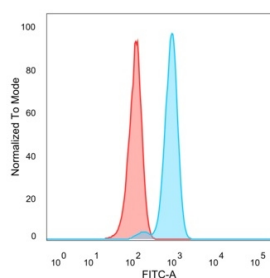
## Images:



SDS-PAGE analysis of Anti-IRF3 Antibody [PCRP-IRF3-3B2] under non-reduced and reduced conditions; showing intact IgG and intact heavy and light chains, respectively. SDS-PAGE analysis confirms the integrity and purity of the antibody.



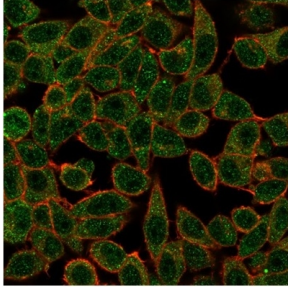
Western blot analysis of HeLa cell line lysate using Anti-IRF3 Antibody [PCRP-IRF3-3B2].



Flow cytometric analysis of PFA-fixed HeLa cells using Anti-IRF3 Antibody [PCRP-IRF3-3B2] followed by Goat Anti-Mouse IgG (CF® 488) (Blue). Isotype Control (Red).

## Anti-IRF3 Antibody [PCR-IRF3-3B2] - BSA and Azide free (A278458)

Images continued:



Immunofluorescent analysis of PFA-fixed HeLa cells stained with Anti-IRF3 Antibody [PCR-IRF3-3B2] followed by Goat Anti-Mouse IgG (CF® 488) (Green). CF® 640A Phalloidin (Red).