

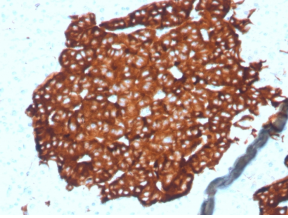
Anti-Synaptophysin Antibody [SYP/4389R] - BSA and Azide free (A278657)

Specifications:

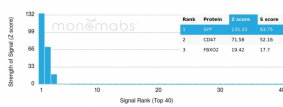
Name:	Anti-Synaptophysin Antibody [SYP/4389R] - BSA and Azide free
Description:	Recombinant rabbit monoclonal [SYP/4389R] antibody to Synaptophysin.
Specificity:	This antibody recognizes a protein of 38kDa that is identified as synaptophysin. It is an N-glycosylated integral membrane protein found in neurons and endocrine cells. Synaptophysin contains four transmembrane domains and may function as a gap junction-like channel. This antibody identifies normal neuroendocrine cells and neuroendocrine neoplasms. Diffuse, finely granular, cytoplasmic staining is observed, which probably correlates with the distribution of the antigen within neurosecretory vesicles. Synaptophysin is an independent, broad-range marker of neural and neuroendocrine differentiation.
Applications:	IHC-P
Recommended Dilutions:	IHC-P: 1-2 µg/ml
Reactivity:	Human
Immunogen:	Recombinant fragment, around amino acids 274-313, of human Synaptophysin protein. The exact sequence is proprietary.
Host:	Rabbit
Clonality:	Monoclonal
Clone ID:	SYP/4389R
Isotype:	IgG
Conjugate:	Unconjugated
Purification:	Protein A/G chromatography.
Concentration:	1 mg/ml
Product Form:	Liquid
Formulation:	Supplied in 10mM Phosphate Buffered Saline; without Sodium Azide and carrier free.
Storage:	Shipped at 4°C. Upon delivery aliquot and store at -20°C. Avoid freeze / thaw cycles.
General Notes:	This monoclonal antibody is also available in a different formulation with BSA and Sodium Azide - Anti-Synaptophysin Antibody [SYP/4389R] (A278069).
Disclaimer:	This product is for research use only. It is not intended for diagnostic or therapeutic use.

Anti-Synaptophysin Antibody [SYP/4389R] - BSA and Azide free (A278657)

Images:



Immunohistochemical analysis of formalin-fixed, paraffin-embedded human pancreas tissue using Anti-Synaptophysin Antibody [SYP/4389R].



Analysis of protein array containing more than 19,000 full-length human proteins using Anti-Synaptophysin Antibody [SYP/4389R]. Z-Score and S-Score: The Z-score represents the strength of a signal that a monoclonal antibody (MAb) (in combination with a fluorescently-tagged anti-IgG secondary antibody) produces when binding to a particular protein on the HuProt™ array. Z-scores are described in units of standard deviations (SD's) above the mean value of all signals generated on that array. If targets on HuProt™ are arranged in descending order of the Z-score, the S-score is the difference (also in units of SD's) between the Z-score. S-score therefore represents the relative target specificity of a MAb to its intended target; a MAb is considered to be specific to its intended target, if the MAb has an S-score of at least 2.5. For example, if a MAb binds to protein X with a Z-score of 43 and to protein Y with a Z-score of 14, then the S-score for the binding of that MAb to protein X is equal to 29.