

## Anti-CD20 Antibody [IGEL/6850R] - BSA and Azide free (A278684)

### Specifications:

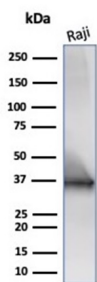
Name:	Anti-CD20 Antibody [IGEL/6850R] - BSA and Azide free
Description:	Recombinant rabbit monoclonal [IGEL/6850R] antibody to CD20.
Specificity:	This antibody recognizes a protein of 30-33kDa, which is identified as CD20. It is a non-Ig differentiation antigen of B-cells and its expression is restricted to normal and neoplastic B-cells, being absent from all other leukocytes and tissues. CD20 is expressed by pre B-cells and persists during all stages of B-cell maturation but is lost upon terminal differentiation into plasma cells. This MAb can be used for immunophenotyping of leukemia and malignant cells, B lymphocyte detection in peripheral blood and B cell localization in tissues. It reacts with the majority of B-cells present in peripheral blood and lymphoid tissues and their derived lymphomas. In lymphoid tissue, germinal center blasts and B-immunoblasts are particularly reactive. It is a reliable antibody for ascribing a B-cell phenotype in known lymphoid tissues. Rarely, CD20-positive T-cell lymphomas have been reported. Reactivity has also been noted with Reed-Sternberg cells in cases of Hodgkin s disease, particularly of lymphocyte predominant type.
Applications:	WB, IHC-P
Recommended Dilutions:	WB: 2-4 µg/ml, IHC-P: 1-2 µg/ml
Reactivity:	Human, Canine
Cross Reactivity:	This antibody is predicted to cross react with Monkey, Baboon, Gorilla, and Chimpanzee.
Immunogen:	Synthetic peptide corresponding to the C terminus (cytoplasmic domain), around amino acids 266-297, of human CD20 protein. The exact sequence is proprietary.
Host:	Rabbit
Clonality:	Monoclonal
Clone ID:	IGEL/6850R
Isotype:	IgG
Conjugate:	Unconjugated
Purification:	Protein A chromatography.
Concentration:	1 mg/ml
Product Form:	Liquid
Formulation:	Supplied in 10mM Phosphate Buffered Saline; without Sodium Azide and carrier free.

## Anti-CD20 Antibody [IGEL/6850R] - BSA and Azide free (A278684)

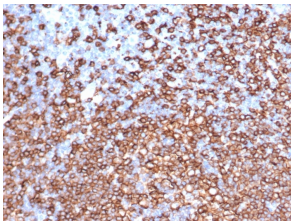
### Specifications continued:

Storage:	Shipped at 4°C. Upon delivery aliquot and store at -20°C. Avoid freeze / thaw cycles.
General Notes:	This monoclonal antibody is also available in a different formulation with BSA and Sodium Azide - Anti-CD20 Antibody [IGEL/6850R] (A278096).
Disclaimer:	This product is for research use only. It is not intended for diagnostic or therapeutic use.

### Images:



Western blot analysis of Raji cell line lysate using Anti-CD20 Antibody [IGEL/6850R].



Immunohistochemical analysis of formalin-fixed, paraffin-embedded human lymph node tissue using Anti-CD20 Antibody [IGEL/6850R].