

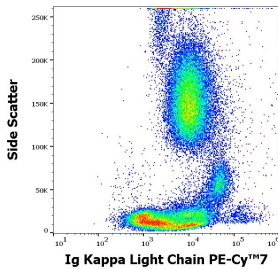
Anti-Human Kappa Light Chain Antibody [TB28-2] (PE-Cyanine 7) (A285796)

Specifications:

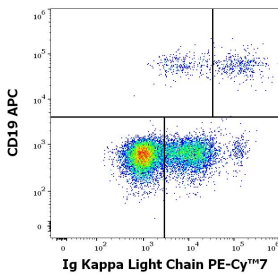
Name:	Anti-Human Kappa Light Chain Antibody [TB28-2] (PE-Cyanine 7)
Description:	Mouse monoclonal [TB28-2] antibody to Human Kappa Light Chain (PE-Cyanine 7).
Specificity:	The antibody TB28-2 recognizes human Ig kappa light chains of both secreted and cell surface immunoglobulin. It detects also free kappa light chains.
Applications:	Flow Cytometry
Recommended Dilutions:	Flow Cytometry: The reagent is designed for analysis of human blood cells using 4 µl reagent / 100 µl of whole blood or 10 ⁶ cells in a suspension.
Reactivity:	Human
Immunogen:	Human IgG-kappa myeloma protein.
Host:	Mouse
Clonality:	Monoclonal
Clone ID:	TB28-2
Isotype:	IgG1
Light Chains:	kappa
Conjugate:	PE-Cyanine 7
Purification:	This antibody is conjugated with PE-Cyanine 7 under optimum conditions. The conjugate is purified by size-exclusion chromatography.
Product Form:	Liquid
Formulation:	Supplied in Phosphate Buffered Saline, pH 7.4, with 15 mM Sodium Azide.
Storage:	Store in the dark at 2-8°C. Avoid prolonged exposure to light. Do not freeze!
Disclaimer:	This product is for research use only. It is not intended for diagnostic or therapeutic use.

Anti-Human Kappa Light Chain Antibody [TB28-2] (PE-Cyanine 7) (A285796)

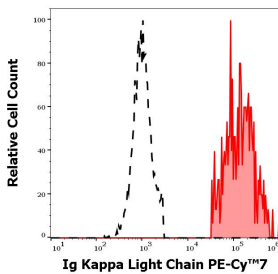
Images:



Flow cytometric analysis of human peripheral whole blood stained with Anti-Human Kappa Light Chain Antibody [TB28-2] (PE-Cyanine 7) (4 μ l reagent / 100 μ l of peripheral whole blood).



Flow cytometry multicolor surface staining of human lymphocytes stained with Anti-Human Kappa Light Chain Antibody [TB28-2] (PE-Cyanine 7) (4 μ l reagent / 100 μ l of peripheral whole blood) and Anti-CD19 Antibody [LT19] (APC) (4 μ l reagent / 100 μ l of peripheral whole blood).



Separation of human Ig Kappa Light Chain positive B cells (red-filled) from Ig Kappa Light Chain negative CD19 negative (black-dashed) in flow cytometry analysis (surface staining) of human peripheral whole blood stained with Anti-Human Kappa Light Chain Antibody [TB28-2] (PE-Cyanine 7) (4 μ l reagent / 100 μ l of peripheral whole blood).