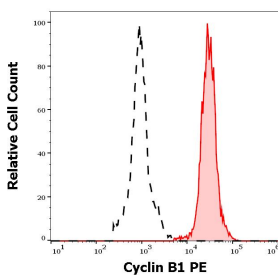


Anti-Cyclin B1 Antibody [V152] (PE) (A285829)

Specifications:

Name:	Anti-Cyclin B1 Antibody [V152] (PE)
Description:	Mouse monoclonal [V152] antibody to Cyclin B1 (PE).
Specificity:	This antibody recognizes cyclin B1, a 48 kDa intracellular protein necessary for G2/M phase transition of the cell cycle.
Applications:	Flow Cytometry
Recommended Dilutions:	Flow Cytometry: The reagent is designed for analysis of human blood cells using 10 μ l reagent / 100 μ l of whole blood or 10 ⁶ cells in a suspension.
Reactivity:	Mammalian
Immunogen:	Recombinant His-tagged hamster cyclin B1.
Host:	Mouse
Clonality:	Monoclonal
Clone ID:	V152
Isotype:	IgG1
Conjugate:	PE
Purification:	This antibody is conjugated with PE under optimum conditions. The conjugate is purified by size-exclusion chromatography.
Product Form:	Liquid
Formulation:	Supplied in Phosphate Buffered Saline, pH 7.4, with 15 mM Sodium Azide.
Storage:	Store in the dark at 2-8°C. Avoid prolonged exposure to light. Do not freeze!
Disclaimer:	This product is for research use only. It is not intended for diagnostic or therapeutic use.

Images:



Separation of K562 cells stained with Anti-Cyclin B1 Antibody [V152] (PE) (10 μ l reagent per million cells in 100 μ l of cell suspension, red-filled) from K562 cells stained with Mouse IgG1 [MOPC-21] (APC) - Isotype Control (concentration in sample is 6 μ g/ml, same as Anti-Cyclin B1 Antibody [V152] (PE) concentration, black-dashed) in flow cytometry analysis (intracellular staining) of K562 cell suspension.