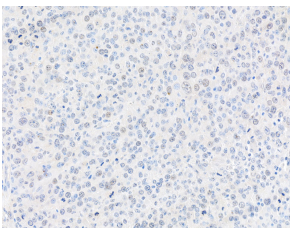


Anti-gamma Histone H2A.X Antibody (A295244)

Specifications:

Name:	Anti-gamma Histone H2A.X Antibody
Description:	Rabbit polyclonal antibody to gamma Histone H2A.X.
Applications:	WB, IHC, ICC/IF
Recommended Dilutions:	ICC/IF: 1:500-1:5,000, IHC: 1:2,000-1:10,000, WB: 1:10,000-1:25,000
Reactivity:	Human, Mouse
Immunogen:	Synthetic peptide around Serine 140 of human gamma Histone H2A.X (NP_002096. 1).
Host:	Rabbit
Clonality:	Polyclonal
Isotype:	IgG
Conjugate:	Unconjugated
Purification:	Antigen affinity purification.
Concentration:	1 mg/ml
Product Form:	Liquid
Formulation:	Supplied in Tris-Citrate/Phosphate Buffer, pH 7-8, with 0.09% Sodium Azide.
Storage:	Shipped at 4°C. Upon delivery aliquot and store at -20°C. Avoid freeze / thaw cycles.
General Notes:	This antibody was affinity purified using the immunising peptide immobilized on solid support. Immunoglobulin concentration was determined by extinction coefficient: absorbance at 280 nm of 1.4 equals 1.0 mg of IgG.
Disclaimer:	This product is for research use only. It is not intended for diagnostic or therapeutic use.

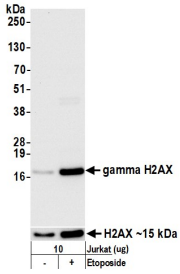
Images:



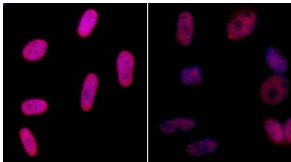
Sample: FFPE section of mouse renal cell carcinoma. Antibody: Anti-gamma Histone H2A.X Antibody (A295244) was used at a dilution of 1:1,000 (1 µg/ml). Detection: DAB.

Anti-gamma Histone H2A.X Antibody (A295244)

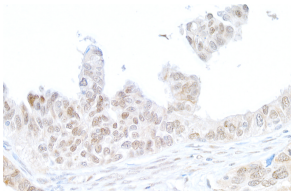
Images continued:



Samples: Whole cell lysate (10 μ g) from Jurkat cells treated with 100 μ M etoposide (+) or mock treated (-). Antibody: Anti-gamma Histone H2A.X Antibody (A295244) was used for WB at 0.04 μ g/ml. Detection: Chemiluminescence with an exposure time of 3 seconds. Lower Panel: Rabbit anti-H2A.X recombinant monoclonal antibody.



Samples: Neocarzinostatin treated asynchronous HeLa cells (left) and untreated asynchronous HeLa cells (right). Antibody: Anti-gamma Histone H2A.X Antibody (A295244) was used at a dilution of 1:5,000 (0.2 μ g/ml). Detection: Red fluorescent Anti-rabbit IgG-DyLight® 594 conjugate used at a dilution of 1:100.



Sample: FFPE section of human ovarian carcinoma. Antibody: Anti-gamma Histone H2A.X Antibody (A295244) was used at a dilution of 1:5,000 (0.2 μ g/ml). Detection: DAB.