

## Anti-HLTF Antibody (A295358)

### Specifications:

Name:	Anti-HLTF Antibody
Description:	Rabbit polyclonal antibody to HLTF.
Applications:	WB, IP
Recommended Dilutions:	IP: 2-5 µg / 1 mg lysate, WB: 1:3,000-1:10,000
Reactivity:	Human, Mouse
Immunogen:	Synthetic peptide within amino acids 600-700 of human HLTF.
Host:	Rabbit
Clonality:	Polyclonal
Isotype:	IgG
Conjugate:	Unconjugated
Purification:	Antigen affinity purification.
Concentration:	1 mg/ml
Product Form:	Liquid
Formulation:	Supplied in Tris-Citrate/Phosphate Buffer, pH 7-8, with 0.09% Sodium Azide.
Storage:	Shipped at 4°C. Upon delivery aliquot and store at -20°C. Avoid freeze / thaw cycles.
General Notes:	This antibody was affinity purified using the immunising peptide immobilized on solid support. Immunoglobulin concentration was determined by extinction coefficient: absorbance at 280 nm of 1.4 equals 1.0 mg of IgG.
Disclaimer:	This product is for research use only. It is not intended for diagnostic or therapeutic use.

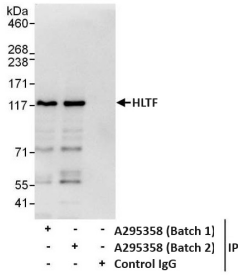
### Images:



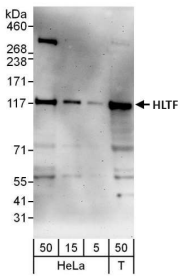
Samples: Whole cell lysate (50 µg) from NIH 3T3, TCMK-1, 4T1, and CT26.WT cells.  
 Antibodies: HLTF Antibody (A295358) used for WB at 0.5 µg/ml. Detection:  
 Chemiluminescence with an exposure time of 3 minutes.

## Anti-HLTF Antibody (A295358)

Images continued:



Samples: Whole cell lysate from HeLa (1 mg for IP, 20% of IP loaded) cells. Antibodies: HLTF Antibody (A295358) was used for WB at 0.4  $\mu\text{g}/\text{ml}$  and used for IP at 6  $\mu\text{g}/\text{mg}$  lysate. HLTF was also immunoprecipitated by a previous lot of this antibody. Detection: Chemiluminescence with exposure time of 10 seconds.



Samples: Whole cell lysate from HeLa (5, 15 and 50  $\mu\text{g}$ ) and HEK293T (T; 50  $\mu\text{g}$ ) cells. Antibodies: HLTF Antibody (A295358) was used for WB at 0.04  $\mu\text{g}/\text{ml}$ . Detection: Chemiluminescence with exposure time of 3 minutes.