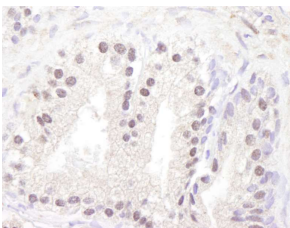


Anti-ATM Antibody (A295418)

Specifications:

Name:	Anti-ATM Antibody
Description:	Rabbit polyclonal antibody to ATM.
Applications:	WB, IP, IHC
Recommended Dilutions:	IHC: 1:500-1:2,000, IP: 3-7 µg / 1 mg lysate, WB: 1:5,000-1:25,000
Reactivity:	Human
Immunogen:	Synthetic peptide within amino acids 2550-2600 of human ATM.
Host:	Rabbit
Clonality:	Polyclonal
Isotype:	IgG
Conjugate:	Unconjugated
Purification:	Antigen affinity purification.
Concentration:	1 mg/ml
Product Form:	Liquid
Formulation:	Supplied in Tris-Citrate/Phosphate Buffer, pH 7-8, with 0.09% Sodium Azide.
Storage:	Shipped at 4°C. Upon delivery aliquot and store at -20°C. Avoid freeze / thaw cycles.
General Notes:	This antibody was affinity purified using the immunising peptide immobilized on solid support. Immunoglobulin concentration was determined by extinction coefficient: absorbance at 280 nm of 1.4 equals 1.0 mg of IgG.
Disclaimer:	This product is for research use only. It is not intended for diagnostic or therapeutic use.

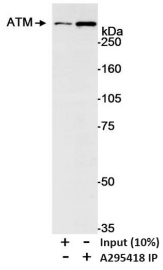
Images:



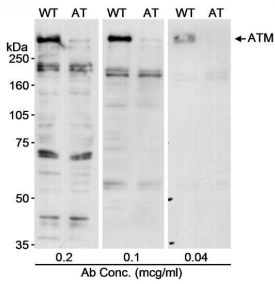
Sample: FFPE section of human prostate-nodular hypertrophy. Antibody: Anti-ATM Antibody (A295418) was used at a dilution of 1:1,000 (1 µg/ml). Detection: DAB.

Anti-ATM Antibody (A295418)

Images continued:



Samples: Whole cell lysate (1 mg) from WT cells. Antibody: Anti-ATM Antibody (A295418) was used at 0.5 µg/mg lysate for IP. Immunoprecipitated ATM was blotted with a monoclonal antibody to ATM. Detection: Chemiluminescence with an exposure time of 30 seconds.



Samples: Whole cell lysate (50 µg) from human L-40 (WT) or AT-59 (AT) cells. Antibody: Anti-ATM Antibody (A295418) was used at the indicated concentrations for WB. Detection: Chemiluminescence with an exposure time of 30 seconds.