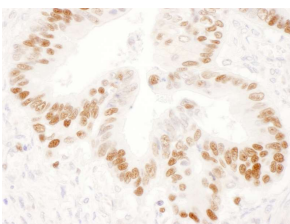


Rabbit Anti-Mouse IgG H&L Antibody (HRP) (A301453)

Specifications:

| | |
|------------------------|--|
| Name: | Rabbit Anti-Mouse IgG H&L Antibody (HRP) |
| Description: | Rabbit anti-mouse IgG H&L (HRP) secondary antibody. |
| Host Species: | Rabbit |
| Target Species: | Mouse |
| Applications: | WB, IHC, ICC, ELISA |
| Recommended Dilutions: | WB: 1:5,000-1:50,000, IHC: 1:50-1:400, ICC: 1:50-1:400, ELISA: 1:10,000-1:100,000 |
| Clonality: | Polyclonal |
| Isotype: | IgG |
| Conjugate: | HRP |
| Product Form: | Liquid |
| Concentration: | 1 mg/ml |
| Purity: | Antigen affinity purification. |
| Purification: | Antigen affinity purification. |
| Formulation: | Supplied in Phosphate Buffered Saline with 0.2% BSA and 0.05% Pro-Clean 400. |
| Storage: | Shipped at 4°C. Store at 4°C. Do not freeze! |
| Disclaimer: | This product is for research use only. It is not intended for diagnostic or therapeutic use. |

Images:



Immunohistochemistry analysis of formalin-fixed, paraffin-embedded human stomach carcinoma section labelling p53 with Anti-p53 Antibody [Clone DO-1], at a 1:100 dilution. Rabbit Anti-Mouse IgG H&L Antibody (HRP) (A301453) was used as the secondary antibody, at a 1:100 dilution. DAB detection. Counterstain: hematoxylin (blue).