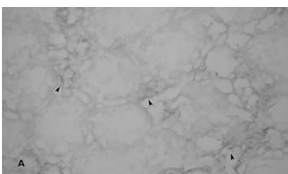


Anti-Endothelin-1 Antibody [ENDO20-2101.70] - BSA and Azide free (A304208)

Specifications:

Name:	Anti-Endothelin-1 Antibody [ENDO20-2101.70] - BSA and Azide free
Description:	Mouse monoclonal [ENDO20-2101.70] antibody to Endothelin-1.
Applications:	ELISA, IHC, RIA
Positive Control:	Rat kidney exposed to 60 minutes of ischemia.
Reactivity:	Human
Immunogen:	Human Endothelin-1.
Host:	Mouse
Clonality:	Monoclonal
Clone ID:	ENDO20-2101.70
Isotype:	IgG1
Conjugate:	Unconjugated
Purification:	Protein A chromatography.
Concentration:	Lot Specific
Product Form:	Liquid
Formulation:	Supplied in Phosphate Buffered Saline, pH 7.4.
Storage:	Shipped at 4°C. Upon delivery aliquot and store at -20°C. Avoid freeze / thaw cycles.
Disclaimer:	This product is for research use only. It is not intended for diagnostic or therapeutic use.

Images:



IHC detection of Endothelin-1 using A304208 at 5-20 µg/ml in paraffin-embedded rat kidney tissue exposed to 60 minutes of ischemia (Wilhelm et al 1999 *Kidney International* 55, 1011-1018).