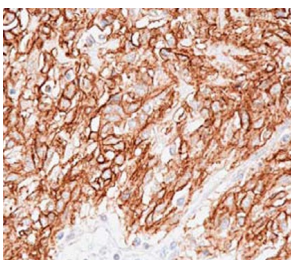


Anti-TMEM16A Antibody [DOG1.1] - BSA and Azide free (A304445)

Specifications:

Name:	Anti-TMEM16A Antibody [DOG1.1] - BSA and Azide free
Description:	Mouse monoclonal [DOG1.1] antibody to TMEM16A.
Applications:	IHC
Recommended Dilutions:	IHC-P: 1-10 µg/ml
Reactivity:	Human
Immunogen:	Synthetic peptide corresponding to amino acids 904-986 of human TMEM16A (Accession no. Q5XXA6).
Host:	Mouse
Clonality:	Monoclonal
Clone ID:	DOG1.1
Isotype:	IgG1
Conjugate:	Unconjugated
Purification:	Protein A chromatography.
Concentration:	Lot Specific
Product Form:	Liquid
Formulation:	Supplied in Phosphate Buffered Saline, pH 7.4.
Storage:	Shipped at 4°C. Upon delivery aliquot and store at -20°C. Avoid freeze / thaw cycles.
General Notes:	For IHC-P perform antigen retrieval with 10mM citrate, pH 6 (boil slides by microwaving in antigen retrieval solution for 12 minutes).
Disclaimer:	This product is for research use only. It is not intended for diagnostic or therapeutic use.

Images:



IHC detection of TMEM16A using A304445 at 1-10 µg/ml in paraffin-embedded gastrointestinal stromal tumors tissue. Antigen retrieval was performed using 10mM citrate, pH 6 (boil slides by microwaving in antigen retrieval solution for 12 minutes).