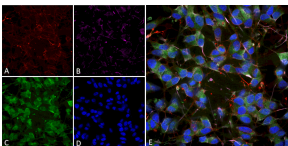


Anti-VGluT1 Antibody [S28-9] (A304823)

Specifications:

Name:	Anti-VGluT1 Antibody [S28-9]
Description:	Mouse monoclonal [S28-9] antibody to VGluT1.
Applications:	WB, IHC
Recommended Dilutions:	WB: 1:1,000
Reactivity:	Human, Mouse, Rat
Cross Reactivity:	This antibody does not cross-react with VGluT2.
Immunogen:	Fusion protein amino acids 493-560 (cytoplasmic C-terminus) of rat VGluT1.
Host:	Mouse
Clonality:	Monoclonal
Clone ID:	S28-9
Isotype:	IgG1
Conjugate:	Unconjugated
Purification:	Protein G purification.
Concentration:	1 mg/ml
Molecular Weight:	~52 kDa
Product Form:	Liquid
Formulation:	Supplied in Phosphate Buffered Saline, pH 7.4, with 50% Glycerol and 0.09% Sodium Azide.
Storage:	Shipped at 4°C. Upon delivery aliquot and store at -20°C. Avoid freeze / thaw cycles.
Disclaimer:	This product is for research use only. It is not intended for diagnostic or therapeutic use.

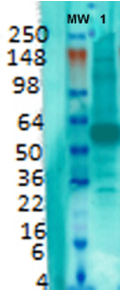
Images:



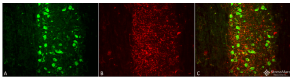
Immunocytochemistry/Immunofluorescence analysis of human differentiated SH-SY5Y, using Anti-VGluT1 Antibody [S28-9] (A304823), at 1:100. The secondary antibody used was AlexaFluor 488. Counterstain: phalloidin (Alexa 647, red), beta tubulin (Anti-beta III Tubulin Ab, Alexa 555, magenta) Hoechst (blue). (A) Phalloidin (B) Anti-beta III Tubulin Ab. (C) VGLUT1 Antibody. (D) Hoechst (E) Composite.

Anti-VGLUT1 Antibody [S28-9] (A304823)

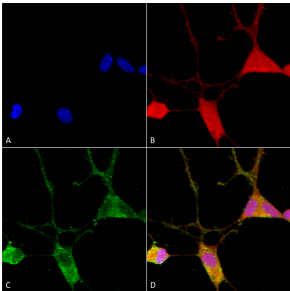
Images continued:



Western blot analysis of rat brain membrane lysate showing detection of VGLUT1 protein using Anti-VGLUT1 Antibody [S28-9] (A304823) at 1:1,000.



Immunohistochemistry analysis of mouse spinal cord, fixed in 4% PFA. The Primary Antibody used was Anti-VGLUT1 Antibody [S28-9] (A304823) at 1:500 for 16 hours at room temperature. The secondary antibody used was Alexa Fluor 555 Donkey Anti-Mouse (red) at 1:2000 for 2 hours at room temperature. Counterstain: NeuN neuronal stain (green). Magnification: 20X.



Immunocytochemistry/Immunofluorescence analysis of human neuroblastoma cells (SH-SY5Y), fixed in 4% PFA for 15 min, using Anti-VGLUT1 Antibody [S28-9] (A304823), at 1:100 for overnight at 4°C with slow rocking. The secondary antibody used was AlexaFluor 488 at 1:1,000 for 1 hour at room temperature. Counterstain: Phalloidin-iFluor 647 (red) F-Actin stain; Hoechst (blue) nuclear stain at 1:800, 1.6mM for 20 minutes at room temperature. (A) Hoechst (blue) nuclear stain. (B) Phalloidin-iFluor 647 (red) F-Actin stain. (C) VGLUT1 Antibody (D) Composite.