

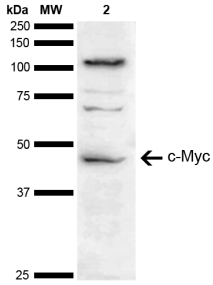
Anti-c-Myc Antibody (A304885)

Specifications:

| | |
|------------------------|---|
| Name: | Anti-c-Myc Antibody |
| Description: | Rabbit polyclonal antibody to c-Myc. |
| Specificity: | This antibody detects additional bands due to post translational modifications. |
| Applications: | WB |
| Recommended Dilutions: | WB: 1:1,000 |
| Reactivity: | Human |
| Immunogen: | Synthetic peptide from the C-terminal of Human c-Myc (339-439 aa), conjugated to Keyhole Limpet Haemocyanin (KLH) |
| Host: | Rabbit |
| Clonality: | Polyclonal |
| Isotype: | IgG |
| Conjugate: | Unconjugated |
| Purification: | Peptide affinity purification. |
| Concentration: | 1 mg/ml |
| Molecular Weight: | 48 kDa |
| Product Form: | Liquid |
| Formulation: | Supplied in Phosphate Buffered Saline, pH 7.4, with 50% Glycerol and 0.09% Sodium Azide. |
| Storage: | Shipped at 4°C. Upon delivery aliquot and store at -20°C. Avoid freeze / thaw cycles. |
| Disclaimer: | This product is for research use only. It is not intended for diagnostic or therapeutic use. |

Anti-c-Myc Antibody (A304885)

Images:



Western blot analysis of human Cervical cancer cell line (HeLa) lysate showing detection of ~48.8 kDa c-Myc protein using Anti-c-Myc Antibody (A304885) at 1:1,000 for 2 hours at room temperature. Lane 1: Molecular Weight Ladder (MW). Lane 2: Cervical Cancer cell line (HeLa) lysate. Load: 10 μ g. Block: 5% Skim Milk in 1X TBST. The secondary antibody used was Goat Anti-Rabbit HRP:IgG at 1:3000 for 1 hour at room temperature. Color Development: ECL solution for 5 minutes at room temperature. Predicted/Observed Size: ~48.8 kDa.