

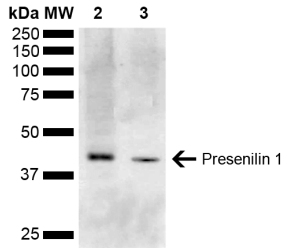
## Anti-Presenilin 1 Antibody (A304926)

### Specifications:

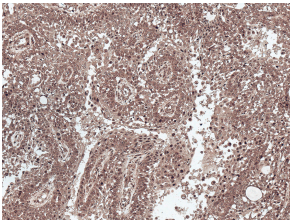
Name:	Anti-Presenilin 1 Antibody
Description:	Rabbit polyclonal antibody to Presenilin 1.
Specificity:	This antibody detects isoform 5.
Applications:	WB, IHC
Recommended Dilutions:	WB: 1:1,000, IHC: 1:50
Reactivity:	Human, Mouse
Immunogen:	Synthetic peptide from the N-terminal of Human Presenilin 1 (aa. 1-100).
Host:	Rabbit
Clonality:	Polyclonal
Isotype:	IgG
Conjugate:	Unconjugated
Purification:	Peptide affinity purification.
Concentration:	1 mg/ml
Molecular Weight:	42.7 kDa
Product Form:	Liquid
Formulation:	Supplied in Phosphate Buffered Saline, pH 7.4, with 50% Glycerol and 0.09% Sodium Azide.
Storage:	Shipped at 4°C. Upon delivery aliquot and store at -20°C. Avoid freeze / thaw cycles.
Disclaimer:	This product is for research use only. It is not intended for diagnostic or therapeutic use.

## Anti-Presenilin 1 Antibody (A304926)

### Images:



Western blot analysis of mouse Kidney, liver showing detection of ~52.7 kDa Presenilin 1 protein using Anti-Presenilin 1 Antibody (A304926) at 1:1,000 for 2 hours at room temperature. Lane 1: Molecular Weight Ladder (MW). Lane 2: mouse Liver. Lane 3: mouse Kidney. Load: 15  $\mu$ g. Block: 5% Skim Milk in 1X TBST. The secondary antibody used was Goat Anti-Rabbit IgG: HRP at 1:5,000 for 1 hour at room temperature. Color Development: ECL solution for 5 minutes at room temperature. Predicted/Observed Size: ~52.7 kDa. Other Band(s): 42.7 kDa band is isoform 5.



Immunohistochemistry analysis of human liver, fixed in formalin and paraffin-embedded. The Primary Antibody used was Anti-Presenilin 1 Antibody (A304926) at 1:50 for 30 minutes at room temperature. Counterstain: Hematoxylin. Magnification: 10X.