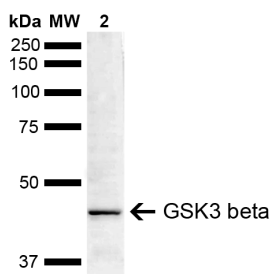


Anti-GSK3 beta Antibody (A304928)

Specifications:

Name:	Anti-GSK3 beta Antibody
Description:	Rabbit polyclonal antibody to GSK3 beta.
Applications:	WB, IHC
Recommended Dilutions:	WB: 1:1,000, IHC: 1:50
Reactivity:	Human, Mouse
Immunogen:	Synthetic peptide from the N-terminal of Human GSK3 beta (aa. 1-100).
Host:	Rabbit
Clonality:	Polyclonal
Isotype:	IgG
Conjugate:	Unconjugated
Purification:	Peptide affinity purification.
Concentration:	1 mg/ml
Molecular Weight:	46.7 kDa
Product Form:	Liquid
Formulation:	Supplied in Phosphate Buffered Saline, pH 7.4, with 50% Glycerol and 0.09% Sodium Azide.
Storage:	Shipped at 4°C. Upon delivery aliquot and store at -20°C. Avoid freeze / thaw cycles.
Disclaimer:	This product is for research use only. It is not intended for diagnostic or therapeutic use.

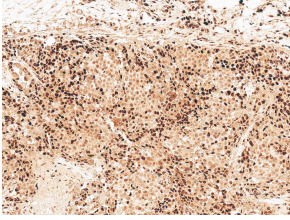
Images:



Western blot analysis of mouse brain showing detection of ~46.7 kDa GSK3 beta protein using Anti-GSK3 beta Antibody (A304928) at 1:1,000 for 16 hours at 4°C. Lane 1: Molecular Weight Ladder (MW). Lane 2: mouse brain. Load: 15 µg. Block: 5% Skim Milk in 1X TBST. The secondary antibody used was Goat Anti-Rabbit IgG: HRP at 1:3000 for 1 hour at room temperature. Color Development: ECL solution for 5 minutes at room temperature. Predicted/Observed Size: ~46.7 kDa.

Anti-GSK3 beta Antibody (A304928)

Images continued:



Immunohistochemistry analysis of human breast cancer, fixed in formalin and paraffin-embedded. The Primary Antibody used was Anti-GSK3 beta Antibody (A304928) at 1:50 for 30 minutes at room temperature. Counterstain: Hematoxylin. Magnification: 10X. HRP-DAB Detection.