

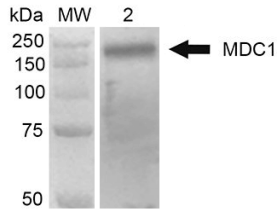
## Anti-MDC1 Antibody [P2B11] (A304945)

### Specifications:

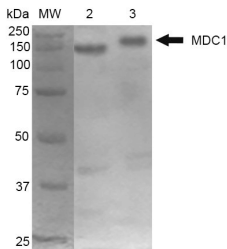
Name:	Anti-MDC1 Antibody [P2B11]
Description:	Mouse monoclonal [P2B11] antibody to MDC1.
Specificity:	This antibody recognizes MDC1 at and around the N-terminus.
Applications:	WB, ICC/IF
Recommended Dilutions:	WB: 1:2,000, ICC/IF: 1:100
Reactivity:	Human, Mouse, Bovine, Chimpanzee
Immunogen:	GST-tagged recombinant protein corresponding to mouse MDC1 at and around the N-terminus.
Host:	Mouse
Clonality:	Monoclonal
Clone ID:	P2B11
Isotype:	IgG1
Conjugate:	Unconjugated
Purification:	Protein G purification.
Concentration:	1 mg/ml
Molecular Weight:	~184 kDa
Product Form:	Liquid
Formulation:	Supplied in Phosphate Buffered Saline, pH 7.4, with 50% Glycerol and 0.09% Sodium Azide.
Storage:	Shipped at 4°C. Upon delivery aliquot and store at -20°C. Avoid freeze / thaw cycles.
Disclaimer:	This product is for research use only. It is not intended for diagnostic or therapeutic use.

## Anti-MDC1 Antibody [P2B11] (A304945)

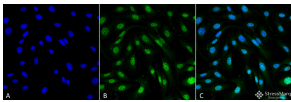
### Images:



Western blot analysis of human Embryonic kidney epithelial cell line (HEK293T) lysate showing detection of 184 kDa MDC1 protein using Anti-MDC1 Antibody [P2B11] (A304945) at 1:1,000 for 2 hours room temperature. Lane 1: MW ladder. Lane 2: 293Trap cell lysates. Load: 30  $\mu$ g. Block: 5% Skim Milk in 1X TBST. The secondary antibody used was Goat Anti-Mouse HRP: IgG at 1:2000 for 60 minutes at room temperature. Color Development: ECL solution for 5 minutes in room temperature. Predicted/Observed Size: 184 kDa.



Western blot analysis of mouse Cortex and Cerebellum showing detection of 184 kDa MDC1 protein using Anti-MDC1 Antibody [P2B11] (A304945) at 1:1,000 for 2 hours room temperature. Lane 1: MW ladder. Lane 2: mouse Cortex. Lane 3: mouse Cerebellum. Load: 10  $\mu$ g. Block: 5% Skim Milk in 1X TBST. The secondary antibody used was Goat Anti-Mouse at 1:2000 for 60 minutes at room temperature. Color Development: ECL solution for 5 minutes in room temperature. Predicted/Observed Size: 184 kDa.



Immunocytochemistry/Immunofluorescence analysis of mouse fibroblast cell line (NIH 3T3), fixed in 4% formaldehyde for 15 min at room temperature, using Anti-MDC1 Antibody [P2B11] (A304945), at 1:100 for 60 minutes at room temperature. The secondary antibody used was Goat Anti-Mouse ATTO 488 at 1:100 for 60 minutes at room temperature. Counterstain: DAPI (blue) nuclear stain at 1:5,000 for 5 minutes room temperature. Localization: Nucleus. Magnification: 60X.