

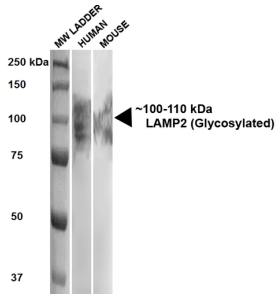
Anti-LAMP2 Antibody [GL2A7] (A304947)

Specifications:

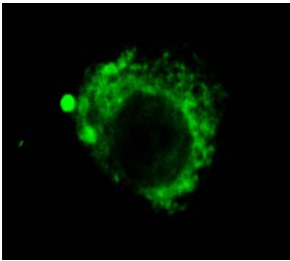
Name:	Anti-LAMP2 Antibody [GL2A7]
Description:	Rat monoclonal [GL2A7] antibody to LAMP2.
Applications:	WB, ICC/IF, IP
Recommended Dilutions:	WB: 1:1,000, ICC/IF: 1:500
Reactivity:	Human, Mouse, Rabbit
Immunogen:	Purified preparation of mouse liver lysosomal membranes.
Host:	Rat
Clonality:	Monoclonal
Clone ID:	GL2A7
Isotype:	IgG1
Conjugate:	Unconjugated
Purification:	Protein G purification.
Concentration:	1 mg/ml
Molecular Weight:	~100-110 kDa
Product Form:	Liquid
Formulation:	Supplied in Phosphate Buffered Saline, pH 7.4, with 50% Glycerol and 0.09% Sodium Azide.
Storage:	Shipped at 4°C. Upon delivery aliquot and store at -20°C. Avoid freeze / thaw cycles.
Disclaimer:	This product is for research use only. It is not intended for diagnostic or therapeutic use.

Anti-LAMP2 Antibody [GL2A7] (A304947)

Images:



Western blot analysis of Human, mouse HEK293 and 3T3NIH cell lysates showing detection of ~100-110 kDa LAMP2 protein using Anti-LAMP2 Antibody [GL2A7] (A304947) at 1:500 for 1 hour at room temperature. Lane 1: MW ladder. Lane 2: human HEK293 lysate (20 μ g). Lane 3: mouse 3T3NIH lysate (10 μ g). Block: 5% milk + TBST for 1 hour at room temperature. The secondary antibody used was HRP Goat Anti-Rat at 1:100 for 1 hour at room temperature. Color Development: TMB solution for 5 minutes at room temperature. Predicted/Observed Size: ~100-110 kDa.



Immunocytochemistry/Immunofluorescence analysis of rabbit corneal endothelial cell (CEC), using Anti-LAMP2 Antibody [GL2A7] (A304947), at 1:1,000. The secondary antibody used was FITC Goat Anti-Rat (green).