

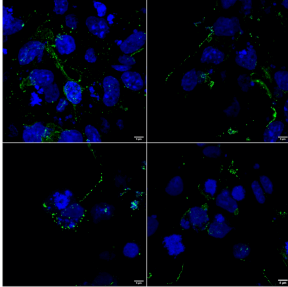
Anti-LRP4 Antibody [S207-27] (A304980)

Specifications:

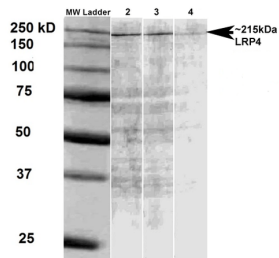
Name:	Anti-LRP4 Antibody [S207-27]
Description:	Mouse monoclonal [S207-27] antibody to LRP4.
Specificity:	This antibody detects the extracellular domain of LRP4. Degradation product can be seen at ~150 kDa.
Applications:	WB, ICC/IF
Recommended Dilutions:	WB: 1:1,000, ICC/IF: 1:100
Reactivity:	Human, Mouse, Rat
Immunogen:	Fusion protein amino acids 26- 350 (extracellular N-terminus) of mouse LTP4 .
Host:	Mouse
Clonality:	Monoclonal
Clone ID:	S207-27
Isotype:	IgG2a
Conjugate:	Unconjugated
Purification:	Protein G purification.
Concentration:	1 mg/ml
Molecular Weight:	~215 kDa
Product Form:	Liquid
Formulation:	Supplied in Phosphate Buffered Saline, pH 7.4, with 50% Glycerol and 0.09% Sodium Azide.
Storage:	Shipped at 4°C. Upon delivery aliquot and store at -20°C. Avoid freeze / thaw cycles.
Disclaimer:	This product is for research use only. It is not intended for diagnostic or therapeutic use.

Anti-LRP4 Antibody [S207-27] (A304980)

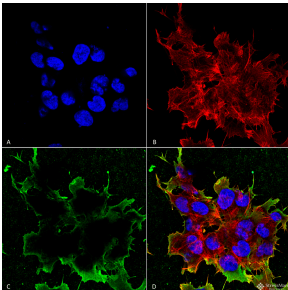
Images:



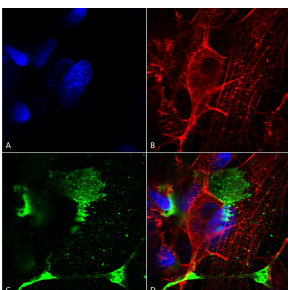
Immunocytochemistry/Immunofluorescence analysis of human COS cells transfected with 2 ug human LRP4 plasmid, fixed in 4% PFA for 10 min, using Anti-LRP4 Antibody [S207-27] (A304980), at 1:100 for 1 hour at room temperature. The secondary antibody used was Goat anti-mouse: Alexa 488. Counterstain: DAPI.



Western blot analysis of rat brain membrane lysate showing detection of LRP4 protein using Anti-LRP4 Antibody [S207-27] (A304980) at 1:500, 1:1000, and 1:2000.



Immunocytochemistry/Immunofluorescence analysis of human neuroblastoma cell line (SK-N-BE, fixed in 4% formaldehyde for 15 min at room temperature, using Anti-LRP4 Antibody [S207-27] (A304980), at 1:100 for 60 minutes at room temperature. The secondary antibody used was Goat Anti-Mouse ATTO 488 at 1:100 for 60 minutes at room temperature. Counterstain: Phalloidin Texas Red F-Actin stain; DAPI (blue) nuclear stain at 1:1000, 1:5,000 for 60min room temperature, 5min room temperature. Localization: Membrane. Magnification: 60X.(A) DAPI (blue) nuclear stain. (B) Phalloidin Texas Red F-Actin stain. (C) LRP4 (Extracellular) Antibody. (D) Composite.



Immunocytochemistry/Immunofluorescence analysis of human neuroblastoma cells (SH-SY5Y), fixed in 4% PFA for 15 min, using Anti-LRP4 Antibody [S207-27] (A304980), at 1:200 for overnight at 4°C with slow rocking. The secondary antibody used was AlexaFluor 488 at 1:1,000 for 1 hour at room temperature. Counterstain: Phalloidin-iFluor 647 (red) F-Actin stain; Hoechst (blue) nuclear stain at 1:800, 1.6mM for 20 minutes at room temperature.(A) Hoechst (blue) nuclear stain. (B) Phalloidin-iFluor 647 (red) F-Actin stain. (C) LRP4 (Extracellular) Antibody (D) Composite.