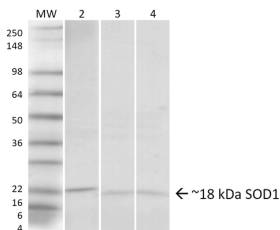


Anti-Superoxide Dismutase 1 Antibody (A305066)

Specifications:

Name:	Anti-Superoxide Dismutase 1 Antibody
Description:	Rabbit polyclonal antibody to Superoxide Dismutase 1.
Specificity:	This antibody recognises a conformation specific epitope where the beta barrel is unfolded.
Applications:	WB, ICC/IF, ELISA
Recommended Dilutions:	WB: 1:1,000, ICC/IF: 1:100
Reactivity:	Human, Mouse, Rat
Immunogen:	Within 50 AA of N-terminal region of human SOD1, unfolded beta barrel region.
Host:	Rabbit
Clonality:	Polyclonal
Isotype:	IgG
Conjugate:	Unconjugated
Purification:	Protein A purification.
Concentration:	1 mg/ml
Product Form:	Liquid
Formulation:	Supplied in Phosphate Buffered Saline with 50% Glycerol and 0.09% Sodium Azide.
Storage:	Shipped at 4°C. Upon delivery aliquot and store at -20°C. Avoid freeze / thaw cycles.
Disclaimer:	This product is for research use only. It is not intended for diagnostic or therapeutic use.

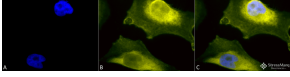
Images:



Western blot analysis of Human, rat, mouse HeLa cells, Brain, lung showing detection of ~18 kDa SOD1 (UBB) protein using Anti-Superoxide Dismutase 1 Antibody (A305066) at 1:1,000. Lane 1: Molecular Weight Ladder. Lane 2: human HeLa Cell Lysates. Lane 3: rat Brain. Lane 4: mouse Lung. Load: 20 µg. Predicted/Observed Size: ~18 kDa.

Anti-Superoxide Dismutase 1 Antibody (A305066)

Images continued:



Immunocytochemistry/Immunofluorescence analysis of human cervical cancer cell line (HeLa), fixed in 2% formaldehyde for 20 minutes at room temperature, using Anti-Superoxide Dismutase 1 Antibody (A305066), at 1:110 for 12 hours at 4°C. The secondary antibody used was R-PE Goat Anti-Rabbit (yellow) at 1:200 for 2 hours at room temperature. Counterstain: DAPI (blue) nuclear stain at 1:40000 for 2 hours at room temperature. Localization: Cytoplasm. Nucleus. Mitochondrion. Magnification: 100x.(A) DAPI (blue) nuclear stain. (B) Anti-SOD1 (UBB) Antibody. (C) Composite.