

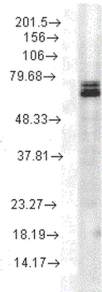
## Anti-HSP70 Antibody [3A3] (A305077)

### Specifications:

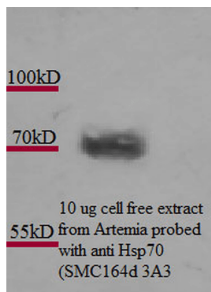
Name:	Anti-HSP70 Antibody [3A3]
Description:	Mouse monoclonal [3A3] antibody to HSP70.
Specificity:	This antibody may detect HSP70, HSC70, p75, and HSP72.
Applications:	WB, IHC, ICC/IF, IP, Antibody Microarray
Recommended Dilutions:	WB: 1:5,000, ICC/IF: 1:500, IP: 2µg
Reactivity:	Human, Mouse, Rat, Amphibians, Chicken, Fish, Yeast, Drosophila, Bacteria, Brine Shrimp
Immunogen:	Recombinant human HSP70 protein, expressed in and purified from E. coli.
Host:	Mouse
Clonality:	Monoclonal
Clone ID:	3A3
Isotype:	IgG1
Conjugate:	Unconjugated
Purification:	Protein G purification.
Concentration:	1 mg/ml
Molecular Weight:	~70 kDa
Product Form:	Liquid
Formulation:	Supplied in Phosphate Buffered Saline, pH 7.2, with 50% Glycerol and 0.09% Sodium Azide.
Storage:	Shipped at 4°C. Upon delivery aliquot and store at -20°C. Avoid freeze / thaw cycles.
Disclaimer:	This product is for research use only. It is not intended for diagnostic or therapeutic use.

## Anti-HSP70 Antibody [3A3] (A305077)

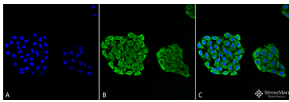
### Images:



Western blot analysis of rat cell lysates showing detection of Hsp70 protein using Anti-HSP70 Antibody [3A3] (A305077) at 1:1,000 for 2 hours at room temperature. Load: 15  $\mu$ g. Block: 1.5% BSA for 30 minutes at room temperature. The secondary antibody used was Sheep Anti-Mouse IgG: HRP for 1 hour at room temperature.



Western blot analysis of *Artemia franciscana* (brine shrimp) cell lysates showing detection of Hsp70 protein using Anti-HSP70 Antibody [3A3] (A305077) at 1:1,000.



Immunocytochemistry/Immunofluorescence analysis of human cervical cancer cell line (HeLa), fixed in 4% formaldehyde for 15 min at room temperature, using Anti-HSP70 Antibody [3A3] (A305077), at 1:100 for 60 minutes at room temperature. The secondary antibody used was Goat Anti-Mouse ATTO 488 at 1:100 for 60 minutes at room temperature. Counterstain: DAPI (blue) nuclear stain at 1:5,000 for 5 minutes room temperature. Localization: Cytoplasm. Magnification: 40X.