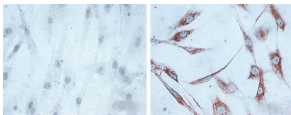


Anti-HSP60 Antibody [LK1] (A305088)

Specifications:

Name:	Anti-HSP60 Antibody [LK1]
Description:	Mouse monoclonal [LK1] antibody to HSP60.
Applications:	WB, IHC, IP, ELISA, Flow Cytometry
Recommended Dilutions:	WB: 1:20,000, IHC: 1:100, ICC/IF: 1:100, IP: 1:200
Reactivity:	Human, Mouse, Rat, Bovine, Canine, Chicken, Drosophila, Guinea Pig, Hamster, Monkey, Porcine, Rabbit, Sheep, Xenopus, Plant, Silkworm
Immunogen:	Recombinant human HSP60 protein.
Host:	Mouse
Clonality:	Monoclonal
Clone ID:	LK1
Isotype:	IgG1
Conjugate:	Unconjugated
Purification:	Protein G purification.
Concentration:	1 mg/ml
Molecular Weight:	~60 kDa
Product Form:	Liquid
Formulation:	Supplied in Phosphate Buffered Saline with 50% Glycerol and 0.09% Sodium Azide.
Storage:	Shipped at 4°C. Upon delivery aliquot and store at -20°C. Avoid freeze / thaw cycles.
Disclaimer:	This product is for research use only. It is not intended for diagnostic or therapeutic use.

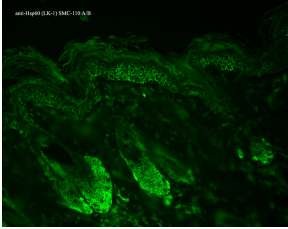
Images:



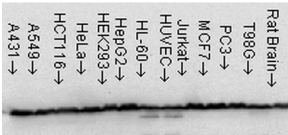
Immunocytochemistry/Immunofluorescence analysis of human skin fibroblasts, fixed in cold 100% methanol for 30 minutes at -20°C, using Anti-HSP60 Antibody [LK1] (A305088), at 1:1,000 for 1 hour at room temperature. The secondary antibody used was DAKO LSAB2 streptavidin-peroxidase system. Counterstain: Mayer Hematoxylin (purple/blue) nuclear stain. Left: control; Right: 24 hours after 7th passage of senescence.

Anti-HSP60 Antibody [LK1] (A305088)

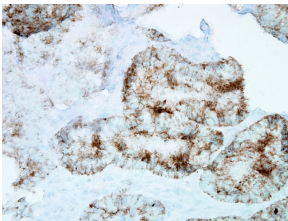
Images continued:



Immunohistochemistry analysis of mouse backskin, fixed in Bouin's fixative solution and paraffin-embedded. The Primary Antibody used was Anti-HSP60 Antibody [LK1] (A305088) at 1:100 for 1 hour at room temperature. The secondary antibody used was FITC Goat Anti-Mouse (green) at 1:50 for 1 hour at room temperature. Localization: Epidermis.



Western blot analysis of human Cell line lysates showing detection of Hsp60 protein using Anti-HSP60 Antibody [LK1] (A305088) at 1:1,000 for 2 hours at room temperature. Load: 15 µg. Block: 1.5% BSA for 30 minutes at room temperature. The secondary antibody used was Sheep Anti-Mouse IgG: HRP for 1 hour at room temperature.



Immunohistochemistry analysis of human colon carcinoma, fixed in formalin. The Primary Antibody used was Anti-HSP60 Antibody [LK1] (A305088) at 1:100,000 for 12 hours at 4°C. The secondary antibody used was Biotin Goat Anti-Mouse at 1:2000 for 1 hour at room temperature. Counterstain: Mayer Hematoxylin (purple/blue) nuclear stain at 200 µl for 2 minutes at room temperature. Localization: Inflammatory cells. Magnification: 40x.