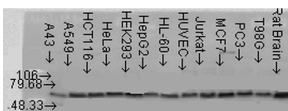


## Anti-AKT2 Antibody (A305096)

### Specifications:

Name:	Anti-AKT2 Antibody
Description:	Rabbit polyclonal antibody to AKT2.
Specificity:	This antibody does not react with PKB alpha (Akt1) or PKB gamma (Akt3).
Applications:	WB, ICC/IF, ELISA
Recommended Dilutions:	WB: 1:1,000, ICC/IF: 1:25
Reactivity:	Human, Mouse, Rat, Bovine, Chicken, Canine, Guinea Pig, Hamster, Monkey, Porcine, Rabbit, Sheep, Xenopus
Immunogen:	A five residue synthetic peptide from the C-terminal of human AKT2, coupled to KLH.
Host:	Rabbit
Clonality:	Polyclonal
Isotype:	IgG
Conjugate:	Unconjugated
Purification:	Peptide affinity purification.
Concentration:	0.25 mg/ml
Molecular Weight:	~65 kDa
Product Form:	Liquid
Formulation:	Supplied in Tris Buffered Saline with 50% Glycerol and 0.01% Sodium Azide.
Storage:	Shipped at 4°C. Upon delivery aliquot and store at -20°C. Avoid freeze / thaw cycles.
Disclaimer:	This product is for research use only. It is not intended for diagnostic or therapeutic use.

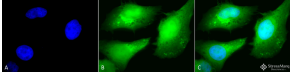
### Images:



Western blot analysis of multiple Cell line lysates showing detection of AKT2 protein using Anti-AKT2 Antibody (A305096) at 1:1,000 for 2 hours at room temperature. Load: 15 µgprotein. Block: 1.5% BSA for 30 minutes at room temperature. The secondary antibody used was Donkey Anti-Rabbit IgG: HRP for 1 hour at room temperature.

## Anti-AKT2 Antibody (A305096)

Images continued:



Immunocytochemistry/Immunofluorescence analysis of human heat shocked cervical cancer cell line (HeLa), fixed in 2% formaldehyde for 20 minutes at room temperature, using Anti-AKT2 Antibody (A305096), at 1:25 for 12 hours at 4°C. The secondary antibody used was FITC Goat Anti-Rabbit (green) at 1:200 for 2 hours at room temperature. Counterstain: DAPI (blue) nuclear stain at 1:40000 for 2 hours at room temperature. Localization: Cytoplasm. Nucleus. Magnification: 100x. (A) DAPI (blue) nuclear stain. (B) Anti-AKT2 Antibody. (C) Composite. Heat Shocked at 42°C for 1h.