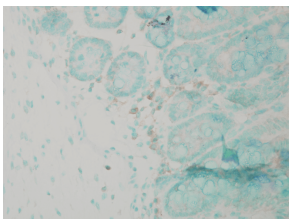


Anti-Calnexin Antibody (A305097)

Specifications:

Name:	Anti-Calnexin Antibody
Description:	Rabbit polyclonal antibody to Calnexin.
Specificity:	This antibody detects the N-terminal domain of Calnexin.
Applications:	WB, IHC, ICC/IF, IP
Recommended Dilutions:	WB: 1:5,000, IHC: 1:100, ICC/IF: 1:100, IP: 1:100
Reactivity:	Human, Mouse, Rat, Bovine, Chicken, Canine, Guinea Pig, Hamster, Porcine, Monkey, Rabbit, Sheep, Xenopus
Immunogen:	A 19 residue synthetic peptide based on dog calnexin and the peptide coupled to KLH.
Host:	Rabbit
Clonality:	Polyclonal
Isotype:	IgG
Conjugate:	Unconjugated
Molecular Weight:	~90 kDa
Purity:	Whole antiserum.
Product Form:	Liquid
Formulation:	Supplied as an aliquot of antiserum.
Storage:	Shipped at 4°C. Upon delivery aliquot and store at -20°C. Avoid freeze / thaw cycles.
Disclaimer:	This product is for research use only. It is not intended for diagnostic or therapeutic use.

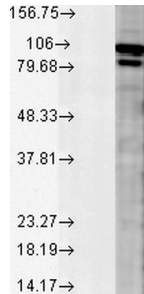
Images:



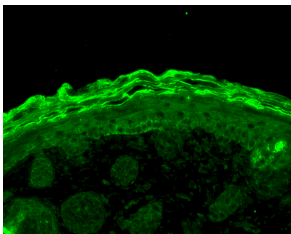
Immunohistochemistry analysis of mouse colon colitis, fixed in formalin. The Primary Antibody used was Anti-Calnexin Antibody (A305097) at 1:100,000 for 12 hours at 4°C. The secondary antibody used was Biotin Goat Anti-Rabbit at 1:2000 for 1 hour at room temperature. Counterstain: Methyl Green at 200uL for 2 min at room temperature. Localization: Inflammatory cells.

Anti-Calnexin Antibody (A305097)

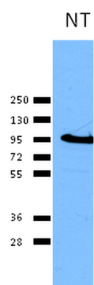
Images continued:



Western blot analysis of rat tissue mix showing detection of Calnexin protein using Anti-Calnexin Antibody (A305097) at 1:5,000 for 2 hours at room temperature. Load: 15 μ g protein. Block: 1.5% BSA for 30 minutes at room temperature. The secondary antibody used was Donkey Anti-Rabbit IgG: HRP for 1 hour at room temperature.



Immunohistochemistry analysis of mouse backskin, fixed in Bouin's fixative solution. The Primary Antibody used was Anti-Calnexin Antibody (A305097) at 1:100 for 1 hour at room temperature. The secondary antibody used was FITC Goat Anti-Rabbit (green) at 1:50 for 1 hour at room temperature. Localization: Upper layer staining and few basal cell cytoplasmic staining.



Western blot analysis of human Cervical cancer cell line (HeLa) lysate showing detection of Calnexin protein using Anti-Calnexin Antibody (A305097) at 1:1,000.