

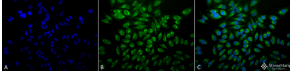
Anti-GRP78 Antibody [1H11-1H7] (A305099)

Specifications:

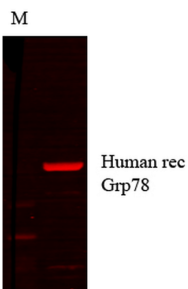
Name:	Anti-GRP78 Antibody [1H11-1H7]
Description:	Mouse monoclonal [1H11-1H7] antibody to GRP78.
Applications:	WB, ICC/IF
Recommended Dilutions:	WB: 1:2,000, ICC/IF: 1:100
Reactivity:	Human, Mouse, Rat, Bovine, Fungi, Hamster, Monkey, Rabbit, Xenopus
Immunogen:	His-tagged human GRP78.
Host:	Mouse
Clonality:	Monoclonal
Clone ID:	1H11-1H7
Isotype:	IgG2b
Conjugate:	Unconjugated
Purification:	Protein G purification.
Concentration:	1 mg/ml
Molecular Weight:	~78 kDa
Product Form:	Liquid
Formulation:	Supplied in Phosphate Buffered Saline, pH 7.4, with 50% Glycerol and 0.09% Sodium Azide.
Storage:	Shipped at 4°C. Upon delivery aliquot and store at -20°C. Avoid freeze / thaw cycles.
Disclaimer:	This product is for research use only. It is not intended for diagnostic or therapeutic use.

Anti-GRP78 Antibody [1H11-1H7] (A305099)

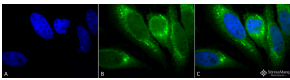
Images:



Immunocytochemistry/Immunofluorescence analysis of human heat shocked cervical cancer cell line (HeLa), fixed in 2% formaldehyde for 20 minutes at room temperature, using Anti-GRP78 Antibody [1H11-1H7] (A305099), at 1:100 for 12 hours at 4°C. The secondary antibody used was FITC Goat Anti-Mouse (green) at 1:200 for 2 hours at room temperature. Counterstain: DAPI (blue) nuclear stain at 1:40000 for 2 hours at room temperature. Localization: Endoplasmic reticulum lumen. Melanosome. Magnification: 20x. (A) DAPI (blue) nuclear stain. (B) Anti-GRP78 Antibody. (C) Composite. Heat Shocked at 42°C for 1h.



Western blot analysis of human cell lysates showing detection of GRP78 protein using Anti-GRP78 Antibody [1H11-1H7] (A305099) at 1:1,000.



Immunocytochemistry/Immunofluorescence analysis of human heat shocked cervical cancer cell line (HeLa), fixed in 2% formaldehyde for 20 minutes at room temperature, using Anti-GRP78 Antibody [1H11-1H7] (A305099), at 1:100 for 12 hours at 4°C. The secondary antibody used was FITC Goat Anti-Mouse (green) at 1:200 for 2 hours at room temperature. Counterstain: DAPI (blue) nuclear stain at 1:40000 for 2 hours at room temperature. Localization: Endoplasmic reticulum lumen. Melanosome. Magnification: 100x. (A) DAPI (blue) nuclear stain. (B) Anti-GRP78 Antibody. (C) Composite. Heat Shocked at 42°C for 1h.