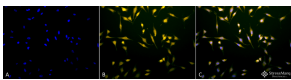


Anti-Rab5 Antibody (A305104)

Specifications:

Name:	Anti-Rab5 Antibody
Description:	Rabbit polyclonal antibody to Rab5.
Applications:	WB, IHC, ICC/IF
Recommended Dilutions:	WB: 1:1,000, IHC: 1:100, ICC/IF: 1:80
Reactivity:	Human, Mouse, Rat, Bovine, Monkey
Immunogen:	Human Rab5 synthetic peptide conjugated to KLH; identical to dog Rab5 sequence over the residues.
Host:	Rabbit
Clonality:	Polyclonal
Isotype:	IgG
Conjugate:	Unconjugated
Purification:	Protein A purification.
Concentration:	1 mg/ml
Molecular Weight:	~26 kDa
Product Form:	Liquid
Formulation:	Supplied in Phosphate Buffered Saline with 50% Glycerol and 0.09% Sodium Azide.
Storage:	Shipped at 4°C. Upon delivery aliquot and store at -20°C. Avoid freeze / thaw cycles.
Disclaimer:	This product is for research use only. It is not intended for diagnostic or therapeutic use.

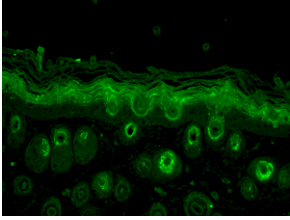
Images:



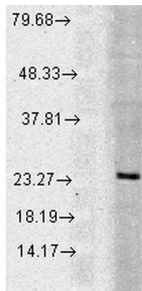
Immunocytochemistry/Immunofluorescence analysis of human cervical cancer cell line (HeLa), fixed in 2% formaldehyde for 20 minutes at room temperature, using Anti-Rab5 Antibody (A305104), at 1:80 for 12 hours at 4°C. The secondary antibody used was FITC Goat Anti-Rabbit (green) at 1:200 for 2 hours at room temperature. Counterstain: DAPI (blue) nuclear stain at 1:40000 for 2 hours at room temperature. Localization: Cytoplasm. Melanosome. Nucleus. Magnification: 20x. (A) DAPI (blue) nuclear stain. (B) Anti-Rab5 Antibody. (C) Composite.

Anti-Rab5 Antibody (A305104)

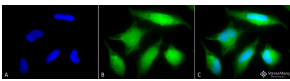
Images continued:



Immunohistochemistry analysis of mouse backskin, fixed in Bouin's fixative solution. The Primary Antibody used was Anti-Rab5 Antibody (A305104) at 1:100 for 1 hour at room temperature. The secondary antibody used was FITC Goat Anti-Rabbit (green) at 1:50 for 1 hour at room temperature. Localization: Cytoplasm.



Western blot analysis of human Cell line lysates showing detection of Rab5 protein using Anti-Rab5 Antibody (A305104) at 1:1,000 for 2 hours at room temperature. Load: 15 µgprotein. Block: 1.5% BSA for 30 minutes at room temperature. The secondary antibody used was Donkey Anti-Rabbit IgG: HRP for 1 hour at room temperature.



Immunocytochemistry/Immunofluorescence analysis of human cervical cancer cell line (HeLa), fixed in 2% formaldehyde for 20 minutes at room temperature, using Anti-Rab5 Antibody (A305104), at 1:80 for 12 hours at 4°C. The secondary antibody used was R-PE Goat Anti-Rabbit (yellow) at 1:200 for 2 hours at room temperature. Counterstain: DAPI (blue) nuclear stain at 1:40000 for 2 hours at room temperature. Localization: Cytoplasm. Melanosome. Nucleus. Magnification: 100x.(A) DAPI (blue) nuclear stain. (B) Anti-Rab5 Antibody. (C) Composite.