

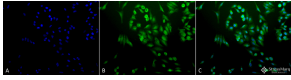
## Anti-Ubiquitin Antibody (A305108)

### Specifications:

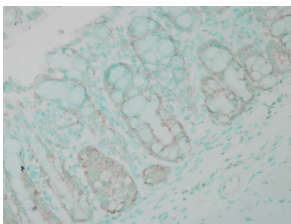
Name:	Anti-Ubiquitin Antibody
Description:	Rabbit polyclonal antibody to Ubiquitin.
Specificity:	This antibody also recognizes ubiquinated proteins.
Applications:	WB, IHC, ICC/IF, IP
Recommended Dilutions:	WB: 1:1,000, IHC: 1:100, ICC/IF: 1:100
Reactivity:	Human, Mouse, Rat, Bovine, Monkey, Hamster, Rabbit, Guinea Pig, Porcine, Canine, Sheep, Chicken, Xenopus, Yeast, Drosophila, Fish, Salmon, Rainbow Trout
Immunogen:	Native bovine Ubiquitin, conjugated to KLH.
Host:	Rabbit
Clonality:	Polyclonal
Isotype:	IgG
Conjugate:	Unconjugated
Purification:	Peptide affinity purification.
Concentration:	1 mg/ml
Molecular Weight:	~10 kDa
Product Form:	Liquid
Formulation:	Supplied in Phosphate Buffered Saline, pH 7.4, with 50% Glycerol and 0.09% Sodium Azide.
Storage:	Shipped at 4°C. Upon delivery aliquot and store at -20°C. Avoid freeze / thaw cycles.
Disclaimer:	This product is for research use only. It is not intended for diagnostic or therapeutic use.

## Anti-Ubiquitin Antibody (A305108)

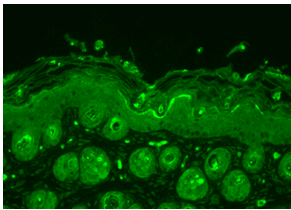
### Images:



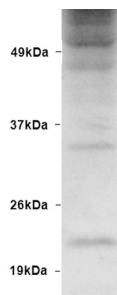
Immunocytochemistry/Immunofluorescence analysis of human cervical cancer cell line (HeLa), fixed in 2% formaldehyde for 20 minutes at room temperature, using Anti-Ubiquitin Antibody (A305108), at 1:200 for 12 hours at 4°C. The secondary antibody used was FITC Goat Anti-Rabbit (green) at 1:200 for 2 hours at room temperature. Counterstain: DAPI (blue) nuclear stain at 1:40000 for 2 hours at room temperature. Localization: Cytoplasm. Magnification: 20x. (A) DAPI (blue) nuclear stain. (B) Anti-Ubiquitin Antibody. (C) Composite.



Immunohistochemistry analysis of human colon carcinoma, fixed in formalin. The Primary Antibody used was Anti-Ubiquitin Antibody (A305108) at 1:100,000 for 12 hours at 4°C. The secondary antibody used was Biotin Goat Anti-Rabbit at 1:2000 for 1 hour at room temperature. Counterstain: Methyl Green at 200uL for 2 min at room temperature. This image was produced using an amplifying IHC wash buffer. The antibody has therefore been diluted more than is recommended for other applications..



Immunohistochemistry analysis of mouse backskin, fixed in Bouin's fixative solution. The Primary Antibody used was Anti-Ubiquitin Antibody (A305108) at 1:100 for 1 hour at room temperature. The secondary antibody used was FITC Goat Anti-Rabbit (green) at 1:50 for 1 hour at room temperature. Localization: Cytoplasm.



Western blot analysis of human Embryonic kidney epithelial cell line (HEK293) lysate showing detection of Ubiquitin protein using Anti-Ubiquitin Antibody (A305108) at 1:1,000.