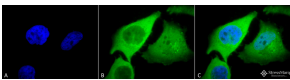


## Anti-Heme Oxygenase 1 Antibody (A305116)

### Specifications:

Name:	Anti-Heme Oxygenase 1 Antibody
Description:	Rabbit polyclonal antibody to Heme Oxygenase 1.
Applications:	WB, ICC/IF, IHC
Recommended Dilutions:	WB: 1:1,000, ICC/IF: 1:100
Reactivity:	Human, Mouse, Rat, Canine
Immunogen:	Human heme-oxygenase (HO-1) synthetic multiple antigenic peptide.
Host:	Rabbit
Clonality:	Polyclonal
Isotype:	IgG
Conjugate:	Unconjugated
Purification:	Protein A purification.
Concentration:	1 mg/ml
Molecular Weight:	~32 kDa
Product Form:	Liquid
Formulation:	Supplied in Phosphate Buffered Saline, pH 7.4, with 50% Glycerol and 0.09% Sodium Azide.
Storage:	Shipped at 4°C. Upon delivery aliquot and store at -20°C. Avoid freeze / thaw cycles.
Disclaimer:	This product is for research use only. It is not intended for diagnostic or therapeutic use.

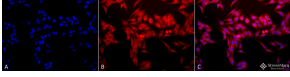
### Images:



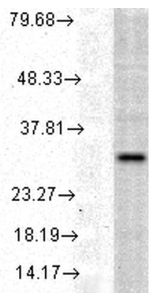
Immunocytochemistry/Immunofluorescence analysis of human cervical cancer cell line (HeLa), fixed in 2% formaldehyde for 20 minutes at room temperature, using Anti-Heme Oxygenase 1 Antibody (A305116), at 1:120 for 12 hours at 4°C. The secondary antibody used was FITC Goat Anti-Rabbit (green) at 1:200 for 2 hours at room temperature. Counterstain: DAPI (blue) nuclear stain at 1:40000 for 2 hours at room temperature. Localization: Endoplasmic reticulum membrane. Cytoplasm. Magnification: 100x. (A) DAPI (blue) nuclear stain. (B) Anti-HO-1 Antibody. (C) Composite.

## Anti-Heme Oxygenase 1 Antibody (A305116)

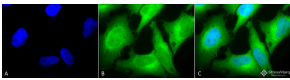
Images continued:



Immunocytochemistry/Immunofluorescence analysis of human heat shocked cervical cancer cell line (HeLa), fixed in 2% formaldehyde for 20 minutes at room temperature, using Anti-Heme Oxygenase 1 Antibody (A305116), at 1:100 for 12 hours at 4°C. The secondary antibody used was APC Goat Anti-Rabbit (red) at 1:200 for 2 hours at room temperature. Counterstain: DAPI (blue) nuclear stain at 1:40000 for 2 hours at room temperature. Localization: Endoplasmic reticulum membrane. Cytoplasm. Magnification: 20x. (A) DAPI (blue) nuclear stain. (B) Anti-HO-1 Antibody. (C) Composite. Heat Shocked at 42°C for 1h.



Western blot analysis of human Cell line lysates showing detection of HO-1 protein using Anti-Heme Oxygenase 1 Antibody (A305116) at 1:1,000 for 2 hours at room temperature. Load: 15 µgprotein. Block: 1.5% BSA. The secondary antibody used was Donkey Anti-Rabbit IgG: HRP for 1 hour at room temperature.



Immunocytochemistry/Immunofluorescence analysis of human heat shocked cervical cancer cell line (HeLa), fixed in 2% formaldehyde for 20 minutes at room temperature, using Anti-Heme Oxygenase 1 Antibody (A305116), at 1:100 for 12 hours at 4°C. The secondary antibody used was FITC Goat Anti-Rabbit (green) at 1:200 for 2 hours at room temperature. Counterstain: DAPI (blue) nuclear stain at 1:40000 for 2 hours at room temperature. Localization: Endoplasmic reticulum membrane. Cytoplasm. Magnification: 100x. Heat Shocked at 42°C for 1h.