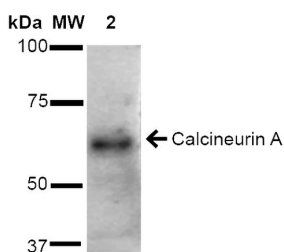


Anti-Calceneurin A Antibody (A305119)

Specifications:

Name:	Anti-Calceneurin A Antibody
Description:	Rabbit polyclonal antibody to Calcineurin A.
Applications:	WB, IHC, ICC/IF, IP
Recommended Dilutions:	WB: 1:1,000, ICC/IF: 1:120, IHC: 1:100
Reactivity:	Human, Mouse, Rat, Canine, Rabbit
Immunogen:	Human Calcineurin A peptide (AA 264-283).
Host:	Rabbit
Clonality:	Polyclonal
Isotype:	IgG
Conjugate:	Unconjugated
Purification:	Peptide affinity purification.
Concentration:	1 mg/ml
Molecular Weight:	~61 kDa
Product Form:	Liquid
Formulation:	Supplied in Phosphate Buffered Saline, pH 7.4, with 50% Glycerol and 0.09% Sodium Azide.
Storage:	Shipped at 4°C. Upon delivery aliquot and store at -20°C. Avoid freeze / thaw cycles.
Disclaimer:	This product is for research use only. It is not intended for diagnostic or therapeutic use.

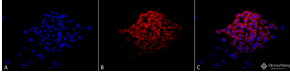
Images:



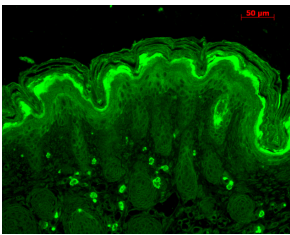
Western blot analysis of rat brain cell lysates showing detection of ~61 kDa Calcineurin A protein using Anti-Calceneurin A Antibody (A305119) at 1:1,000 for 2 hours at room temperature. Lane 1: Molecular Weight Ladder (MW). Lane 2: rat brain cell lysates. Load: 15 μ g. Block: 5% Skim Milk in 1X TBST. The secondary antibody used was Goat Anti-Rabbit IgG: HRP at 1:2000 for 60 minutes at room temperature. Color Development: ECL solution for 5 minutes at room temperature. Predicted/Observed Size: ~61 kDa.

Anti-Calceneurin A Antibody (A305119)

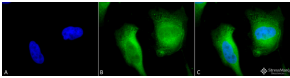
Images continued:



Immunocytochemistry/Immunofluorescence analysis of human cervical cancer cell line (HeLa), fixed in 2% formaldehyde for 20 minutes at room temperature, using Anti-Calceneurin A Antibody (A305119), at 1:120 for 12 hours at 4°C. The secondary antibody used was APC Goat Anti-Rabbit (red) at 1:200 for 2 hours at room temperature. Counterstain: DAPI (blue) nuclear stain at 1:40000 for 2 hours at room temperature. Localization: Cell membrane. Cytoplasm. Magnification: 20x. (A) DAPI (blue) nuclear stain. (B) Anti-Calceneurin A Antibody. (C) Composite.



Immunohistochemistry analysis of mouse backskin, fixed in Bouin's fixative solution. The Primary Antibody used was Anti-Calceneurin A Antibody (A305119) at 1:100 for 1 hour at room temperature. The secondary antibody used was FITC Goat Anti-Rabbit (green) at 1:50 for 1 hour at room temperature. Localization: General epidermis.



Immunocytochemistry/Immunofluorescence analysis of human cervical cancer cell line (HeLa), fixed in 2% formaldehyde for 20 minutes at room temperature, using Anti-Calceneurin A Antibody (A305119), at 1:120 for 12 hours at 4°C. The secondary antibody used was FITC Goat Anti-Rabbit (green) at 1:200 for 2 hours at room temperature. Counterstain: DAPI (blue) nuclear stain at 1:40000 for 2 hours at room temperature. Localization: Cell membrane. Cytoplasm. Magnification: 100x. (A) DAPI (blue) nuclear stain. (B) Anti-Calceneurin A Antibody. (C) Composite.