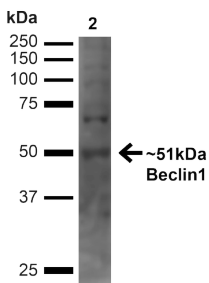


## Anti-Beclin 1 Antibody (A305169)

### Specifications:

Name:	Anti-Beclin 1 Antibody
Description:	Rabbit polyclonal antibody to Beclin 1.
Specificity:	Predicted molecular weight at ~51 kDa.
Applications:	WB, ICC/IF
Recommended Dilutions:	WB: 1:1,000, ICC/IF: 1:100
Reactivity:	Human, Rat
Immunogen:	Synthetic peptide from the C-terminus of human Beclin 1.
Host:	Rabbit
Clonality:	Polyclonal
Isotype:	IgG
Conjugate:	Unconjugated
Purification:	Peptide affinity purification.
Concentration:	1 mg/ml
Product Form:	Liquid
Formulation:	Supplied in Phosphate Buffered Saline with 50% Glycerol and 0.09% Sodium Azide.
Storage:	Shipped at 4°C. Upon delivery aliquot and store at -20°C. Avoid freeze / thaw cycles.
Disclaimer:	This product is for research use only. It is not intended for diagnostic or therapeutic use.

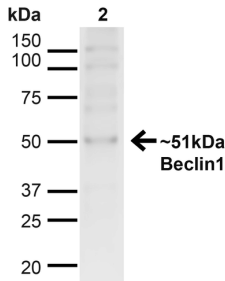
### Images:



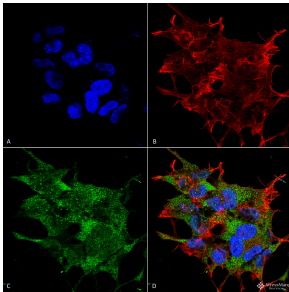
Western blot analysis of human Embryonic kidney epithelial cell line (HEK293T) lysate showing detection of ~51kDa Beclin 1 protein using Anti-Beclin 1 Antibody (A305169) at 1:1,000 for 1 hour at room temperature. Lane 1: MW Ladder. Lane 2: human 293T (20 µg). Load: 20 µg. Block: 5% milk + TBST for 1 hour at room temperature. The secondary antibody used was Goat Anti-Rabbit: HRP at 1:2000 for 1 hour at room temperature. Color Development: TMB solution for 12 min at room temperature. Predicted/Observed Size: ~51kDa.

## Anti-Beclin 1 Antibody (A305169)

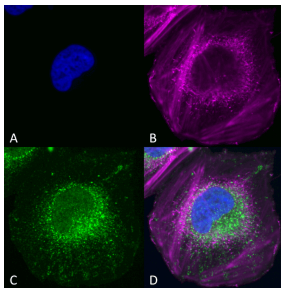
Images continued:



Western blot analysis of human Cervical cancer cell line (HeLa) lysate showing detection of ~51kDa Beclin 1 protein using Anti-Beclin 1 Antibody (A305169) at 1:1,000 for 1 hour at room temperature. Lane 1: MW Ladder. Lane 2: human HeLa (20 µg). Load: 20 µg. Block: 5% milk + TBST for 1 hour at room temperature. The secondary antibody used was Goat Anti-Rabbit: HRP at 1:2000 for 1 hour at room temperature. Color Development: TMB solution for 12 min at room temperature. Predicted/Observed Size: ~51kDa.



Immunocytochemistry/Immunofluorescence analysis of human neuroblastoma cell line (SK-N-BE, fixed in 4% formaldehyde for 15 min at room temperature, using Anti-Beclin 1 Antibody (A305169), at 1:100 for 60 minutes at room temperature. The secondary antibody used was Goat Anti-Rabbit ATTO 488 at 1:100 for 60 minutes at room temperature. Counterstain: Phalloidin Texas Red F-Actin stain; DAPI (blue) nuclear stain at 1:1000, 1:5,000 for 60min room temperature, 5min room temperature. Localization: Golgi apparatus, Dendrites and Cell bodies of cerebellar Purkinje cells. Magnification: 60X.(A) DAPI (blue) nuclear stain (B) Phalloidin Texas Red F-Actin stain (C) Beclin 1 Antibody (D) Composite.



Immunocytochemistry/Immunofluorescence analysis of human SK-N-BE, using Anti-Beclin 1 Antibody (A305169), at 1:200 for Overnight. The secondary antibody used was Anti-Rabbit: AlexaFluor 555 at 1:1,000. Counterstain: Hoechst, Phalloidin AlexaFluor 647 at 1:1,000. Localization: Mitochondria, endosomes/exosomes. A) Hoechst Nuclear Stain B) Phalloidin AlexaFluor 647 C) Anti-Beclin 1 D) Merge.