

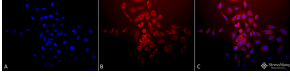
## Anti-SOD2 / MnSOD Antibody (A305174)

### Specifications:

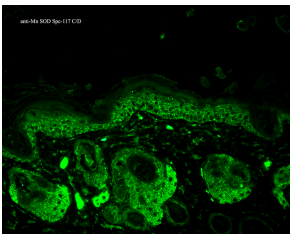
Name:	Anti-SOD2 / MnSOD Antibody
Description:	Rabbit polyclonal antibody to SOD2 / MnSOD.
Applications:	WB, IHC, ICC/IF, IP, ELISA
Recommended Dilutions:	WB: 1:5,000, IHC: 1:100, ICC/IF: 1:120
Reactivity:	Human, Rat, Mouse, Bovine, Canine, Chicken, Drosophila, Guinea Pig, Porcine, Hamster, Monkey, Rabbit, Sheep, Xenopus, Squirrel, Invertebrate, Sea squirt
Immunogen:	Recombinant Rat Mn SOD Protein.
Host:	Rabbit
Clonality:	Polyclonal
Isotype:	IgG
Conjugate:	Unconjugated
Purification:	Protein A purification.
Concentration:	1 mg/ml
Molecular Weight:	~25 kDa
Product Form:	Liquid
Formulation:	Supplied in Phosphate Buffered Saline, pH 7.4, with 50% Glycerol and 0.09% Sodium Azide.
Storage:	Shipped at 4°C. Upon delivery aliquot and store at -20°C. Avoid freeze / thaw cycles.
Disclaimer:	This product is for research use only. It is not intended for diagnostic or therapeutic use.

## Anti-SOD2 / MnSOD Antibody (A305174)

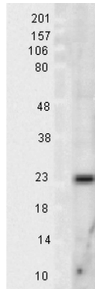
### Images:



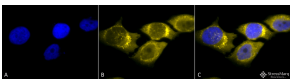
Immunocytochemistry/Immunofluorescence analysis of human cervical cancer cell line (HeLa), fixed in 2% formaldehyde for 20 minutes at room temperature, using Anti-SOD2 / MnSOD Antibody (A305174), at 1:120 for 12 hours at 4°C. The secondary antibody used was APC Goat Anti-Rabbit (red) at 1:200 for 2 hours at room temperature. Counterstain: DAPI (blue) nuclear stain at 1:40000 for 2 hours at room temperature. Localization: Mitochondrion matrix. Magnification: 20x. (A) DAPI (blue) nuclear stain. (B) Anti-SOD (Mn) Antibody. (C) Composite.



Immunohistochemistry analysis of mouse backskin, fixed in Bouin's fixative solution. The Primary Antibody used was Anti-SOD2 / MnSOD Antibody (A305174) at 1:100 for 1 hour at room temperature. The secondary antibody used was FITC Goat Anti-Rabbit (green) at 1:50 for 1 hour at room temperature. Localization: Mitochondrion matrix.



Western blot analysis of rat tissue lysates showing detection of SOD2 protein using Anti-SOD2 / MnSOD Antibody (A305174) at 1:1,000 for 2 hours at room temperature. Load: 15 µg protein. Block: 1.5% BSA for 30 minutes at room temperature. The secondary antibody used was Donkey Anti-Rabbit IgG: HRP for 1 hour at room temperature.



Immunocytochemistry/Immunofluorescence analysis of human cervical cancer cell line (HeLa), fixed in 2% formaldehyde for 20 minutes at room temperature, using Anti-SOD2 / MnSOD Antibody (A305174), at 1:120 for 12 hours at 4°C. The secondary antibody used was R-PE Goat Anti-Rabbit (yellow) at 1:200 for 2 hours at room temperature. Counterstain: DAPI (blue) nuclear stain at 1:40000 for 2 hours at room temperature. Localization: Mitochondrion matrix. Magnification: 100x. (A) DAPI (blue) nuclear stain. (B) Anti-SOD (Mn) Antibody. (C) Composite.