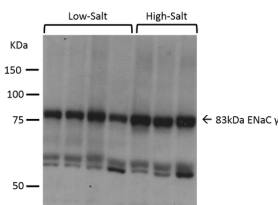


Anti-SCNN1G Antibody (A305215)

Specifications:

Name:	Anti-SCNN1G Antibody
Description:	Rabbit polyclonal antibody to SCNN1G.
Applications:	WB, IHC, ICC/IF
Recommended Dilutions:	WB: 1:1,000, IHC: 1:100
Reactivity:	Rat, Mouse, Xenopus, Hamster, Human
Immunogen:	Produced against the C-terminal tail (amino acids 629-650) of rat gamma ENaC (antibody designation L550).
Host:	Rabbit
Clonality:	Polyclonal
Isotype:	IgG
Conjugate:	Unconjugated
Purification:	Protein A purification.
Concentration:	1 mg/ml
Molecular Weight:	~83 kDa
Product Form:	Liquid
Formulation:	Supplied in Phosphate Buffered Saline with 50% Glycerol and 0.09% Sodium Azide.
Storage:	Shipped at 4°C. Upon delivery aliquot and store at -20°C. Avoid freeze / thaw cycles.
Disclaimer:	This product is for research use only. It is not intended for diagnostic or therapeutic use.

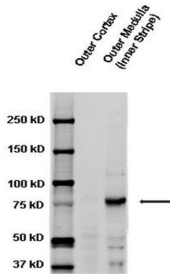
Images:



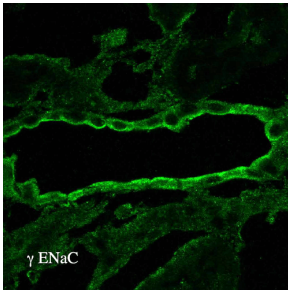
Western blot analysis of mouse kidney cortex showing detection of ENaC protein using Anti-SCNN1G Antibody (A305215) at 1:1,000. Low-salt diet (lanes 1-4) compared to a high-salt diet (lanes 5-7). 70kDa degradation band observed in low-salt.

Anti-SCNN1G Antibody (A305215)

Images continued:



Western blot analysis of rat kidney tissue lysates showing detection of ENaC protein using Anti-SCNN1G Antibody (A305215) at 1:1,000.



Immunohistochemistry analysis of rat kidney tissue. The Primary Antibody used was Anti-SCNN1G Antibody (A305215) at 1:100. The secondary antibody used was FITC Goat Anti-Rabbit (green).