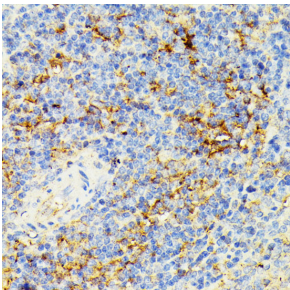


Anti-ECE1 Antibody (A305292)

Specifications:

Name:	Anti-ECE1 Antibody
Description:	Rabbit polyclonal antibody to ECE1.
Applications:	WB, IHC, ICC/IF
Recommended Dilutions:	WB: 1:500-1:2,000, IHC: 1:50-1:200, ICC/IF: 1:50-1:200
Reactivity:	Human, Mouse, Rat
Immunogen:	Recombinant fusion protein containing a sequence corresponding to amino acids 670-770 of human ECE1 (NP_001388.1).
Sequence:	ADNGGLKAAYRAYQNWVKKNGAEHSLPTLGLTNNQLFFLGFAQWCSVRTPESSHEGL ITDPHSPSRFRVIGSLSNSKEFSEHFRCPPGSPMNPPHKCEVW
Host:	Rabbit
Clonality:	Polyclonal
Isotype:	IgG
Conjugate:	Unconjugated
Purification:	Affinity purification.
Product Form:	Liquid
Formulation:	Supplied in Phosphate Buffered Saline, pH 7.3, with 50% Glycerol and 0.01% Thiomersal.
Storage:	Shipped at 4°C. Upon delivery aliquot and store at -20°C. Avoid freeze / thaw cycles.
Disclaimer:	This product is for research use only. It is not intended for diagnostic or therapeutic use.

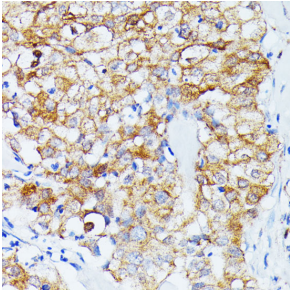
Images:



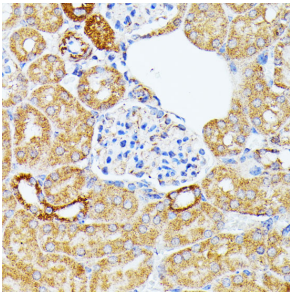
Immunohistochemistry analysis of paraffin-embedded rat spleen using Anti-ECE1 Antibody (A305292) at a dilution of 1:100 (40x lens). Perform microwave antigen retrieval with 10 mM PBS buffer pH 7.2 before commencing with IHC staining protocol.

Anti-ECE1 Antibody (A305292)

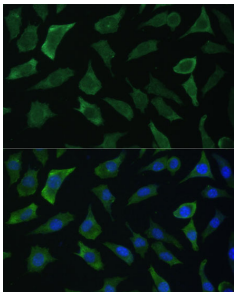
Images continued:



Immunohistochemistry analysis of paraffin-embedded human mammary cancer using Anti-ECE1 Antibody (A305292) at a dilution of 1:100 (40x lens). Perform microwave antigen retrieval with 10 mM PBS buffer pH 7.2 before commencing with IHC staining protocol.



Immunohistochemistry analysis of paraffin-embedded mouse kidney using Anti-ECE1 Antibody (A305292) at a dilution of 1:100 (40x lens). Perform microwave antigen retrieval with 10 mM PBS buffer pH 7.2 before commencing with IHC staining protocol.



Immunofluorescence analysis of L929 cells using Anti-ECE1 Antibody (A305292) at a dilution of 1:100 (40x lens). DAPI was used to stain the cell nuclei (blue).