

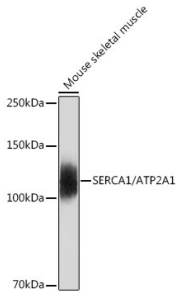
## Anti-SERCA1 ATPase Antibody [ARC2207] (A305365)

### Specifications:

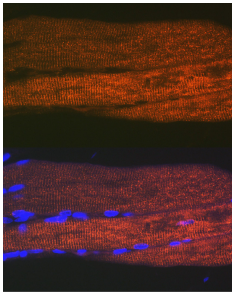
Name:	Anti-SERCA1 ATPase Antibody [ARC2207]
Description:	Rabbit monoclonal [ARC2207] antibody to SERCA1 ATPase.
Applications:	WB, ICC/IF
Recommended Dilutions:	WB: 1:500-1:2,000, ICC/IF: 1:50-1:200
Reactivity:	Human, Mouse, Rat
Immunogen:	A synthetic peptide corresponding to a sequence within amino acids 900-1001 of human SERCA1/ATP2A1 (O14983).
Sequence:	ALSVLVTIEMCNALNSLSENQSLLRMPPWVNIWLLGSICLSMSLHFLILYVDPLPMIF KLRALDLTQWLMVLKISLPVIGLDEILKVFARNYLEDPEDERRK
Host:	Rabbit
Clonality:	Monoclonal
Clone ID:	ARC2207
Isotype:	IgG
Conjugate:	Unconjugated
Purification:	Affinity purification.
Molecular Weight:	110 kDa
Product Form:	Liquid
Formulation:	Supplied in Phosphate Buffered Saline, pH 7.3, with 50% Glycerol, 0.05% BSA, and 0.02% Sodium Azide.
Storage:	Shipped at 4°C. Upon delivery aliquot and store at -20°C. Avoid freeze / thaw cycles.
Disclaimer:	This product is for research use only. It is not intended for diagnostic or therapeutic use.

## Anti-SERCA1 ATPase Antibody [ARC2207] (A305365)

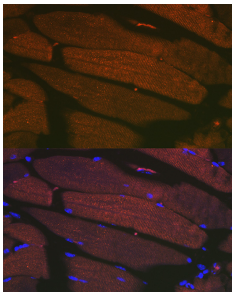
### Images:



Western blot analysis of extracts of Mouse skeletal muscle, using Anti-SERCA1 ATPase Antibody [ARC2207] (A305365) at 1:500 dilution. The secondary antibody was Goat Anti-Rabbit IgG H&L Antibody (HRP) at 1:10,000 dilution. Lysates/proteins were present at 25µg per lane. The blocking buffer used was 3% non-fat dry milk in TBST. Detection was with a ECL Basic Kit. Exposure time: 30s.



Immunofluorescence analysis of rat bone marrow cells using Anti-SERCA1 ATPase Antibody [ARC2207] (A305365) at a dilution of 1:100 (40x lens). DAPI was used to stain the cell nuclei (blue).



Immunofluorescence analysis of mouse bone marrow cells using Anti-SERCA1 ATPase Antibody [ARC2207] (A305365) at a dilution of 1:100 (40x lens). DAPI was used to stain the cell nuclei (blue).